



Level Set Collection | LVT
Textured Woodgrains
& Stones

Interface®

Level Set™ Collection | Textured Woodgrains & Stones

With thoughtful consideration for design, performance and a sustainable path, we are crafting a collection of luxury vinyl tiles that fit perfectly into the Interface modular flooring system.

We debut with Level Set™ a collection of 36 tiles sorted into two groupings. Level Set Natural Woodgrains & Stones is a selection of 25cm x 1m planks and 50cm x 50cm squares in classic wood and stone looks. Level Set Textured Woodgrains and Patterns, offered in the same formats, presents patterns inspired by distressed, reclaimed and exposed materials.

Level Set Collection is not only a perfect match to our skinny planks and squares carpet tiles, it is also a perfect fit, side by side. Engineered to the same height means better coverage of irregularities in the sub-floor, lower sound transference from floor to floor and, most importantly, the ability to effortlessly move from hard to soft flooring without transition strips or layering.

Level Set Collection is constructed with the same type of backing as our carpet tiles—that means the unmatched ease of a glue-free TacTile® installation is available for hard surface now, too! And, of course, we make all of these choices with minimizing our footprint and feeding ReEntry®, our recycling program, in mind.



PRODUCT TEXTURED STONES COLOR A00303 WARM POLISHED CEMENT
INSTALLED MONOLITHIC





PRODUCT TEXTURED WOODGRAINS **COLOR** A00405 GREY DUNE **INSTALLED** ASHLAR
COLLECTION WORLD WOVEN™ **PRODUCT** WW890 **COLOR** 105385 CHARCOAL DOBBY **INSTALLED** ASHLAR





PRODUCT TEXTURED WOODGRAINS **COLOR** A00401 DISTRESSED WALNUT **INSTALLED** ASHLAR
COLLECTION WORLD WOVEN **PRODUCT** WW880 **COLOR** 105359 LINEN LOOM **INSTALLED** ASHLAR

Specifications

Product Number	A004
Product Construction	High Performance Luxury Vinyl Tile
Class / ASTM F1700	Class III Printed Vinyl Plank
Wear Layer Thickness	22 mil
Total Thickness	4.5 mm
Backing Class	Commercial Grade
Finish	Ceramor® Coating
Nominal Dimensions	25cm x 1m (9.845 in x 39.38 in)
Installation Recommendation	Floating Floor with TacTiles® Glue-Free Installation System

Performance

IIC Sound Rating	(ASTM E492-09) 57 IIC
Slip Resistance	(ASTM D2047) >0.55 wet/dry, ADA Compliant
Static Load Limit	(ASTM F970) 1500 psi
Flexibility	(ASTM F137) Passes
Resistance to Heat	(ASTM F1514) Passes
Resistance to Light	(ASTM F925) Passes
Radiant Flux	(ASTM E648) Class I
Smoke Density	(ASTM E662) Passes, ≤450
Size & Squareness	(ASTM F2055) Passes, +/- 0.016 in. per linear foot
Thickness	(ASTM F386) Passes
Dimensional Stability	(ASTM F2199) Passes
Residual Indentation	(ASTM F1914) Passes
Resistance to Chemicals	(ASTM F925) Passes

Environmental

Indoor Air Quality	FloorScore®/CDPH 01350 Certified for low-VOC emissions
Material Composition	Free of Ortho Phthalates, Added Formaldehyde and Heavy Metal Stabilizers
Ingredients & Life Cycle Impacts	Environmental Product Declaration
Carbon Footprint	3rd Party Verified Carbon Neutral
Sustainability Assessment	NSF/ANSI 332, Meets Certification Guidelines
LEED v4	Contributes to IEQ: <i>Low Emitting Materials</i> ; M&R: <i>EPD and EPR</i>
End of Life	Fully Recyclable LVT to Carpet Tile Backing

Packaging

Square Feet per Carton	26.91 sq. ft. (2.5 m ²)
Pieces per Carton	10
Weight per Carton	40 lbs (18 kg)
Cartons per Pallet	40
Pallets per Truckload	20

Technical Information

Installation	See Interface LVT Installation Guidelines online
Maintenance	See Interface LVT Maintenance Guidelines online
Reclamation	Recyclable through ReEntry® - Call 1.888.733.6873 (U.S.) / 1.866.398.3191 (Canada)
Warranty	15 Year Limited Commercial Warranty
Installation Methods	Ashlar, Herringbone



All product specifications reflect averages derived from product sample testing, are subject to normal manufacturing and testing tolerances and inherent pattern variances, and may be changed without notice. For more information about these and other important attributes of the product(s) described herein, including recycled content and product warranty information, please see our full LVT product disclaimer @ interface.com.

Textured Woodgrains Colorline



A00401 DISTRESSED WALNUT



A00402 DISTRESSED CASHEW



A00403 DISTRESSED HICKORY



A00404 DISTRESSED BLACK WALNUT



A00405 GREY DUNE



A00406 ANTIQUE LIGHT OAK



A00407 WHITE WASH



A00408 ANTIQUE GRAY OAK



A00409 ASH WALNUT



A00410 SILVER WALNUT



A00411 DARK WALNUT



A00412 RECLAIMED HICKORY



PRODUCT TEXTURED WOODGRAINS **COLOR** A00409 ASH WALNUT
INSTALLED ASHLAR



PRODUCT TEXTURED STONES **COLOR** A00306 JERSEY MARBLE **INSTALLED** NON DIRECTIONAL
COLLECTION WORLD WOVEN **PRODUCT** WW880 **COLOR** CHARCOAL LOOM **INSTALLED** ASHLAR



PRODUCT TEXTURED STONES COLOR A00303 WARM POLISHED CEMENT INSTALLED NON DIRECTIONAL
FLOR PRODUCT MOD CAFÉ COLOR 105423 STAR CHARCOAL INSTALLED QUARTER TURN



PRODUCT TEXTURED STONES COLORS A00301 POLISHED CEMENT INSTALLED NON DIRECTIONAL
FLOR PRODUCT SCOTTISH SETT COLOR 105434 PLAID NATURAL INSTALLED MONOLITHIC

Specifications

Product Number	A003
Product Construction	High Performance Luxury Vinyl Tile
Class / ASTM F1700	Class III Printed Vinyl Square
Wear Layer Thickness	22 mil
Total Thickness	4.5 mm
Backing Class	Commercial Grade
Finish	Ceramor® Coating
Nominal Dimensions	25cm x 1m (9.845 in x 39.38 in)
Installation Recommendation	Floating Floor with TacTiles® Glue-Free Installation System

Performance

IIC Sound Rating	(ASTM E492-09) 57 IIC
Slip Resistance	(ASTM D2047) >0.55 wet/dry, ADA Compliant
Static Load Limit	(ASTM F970) 1500 psi
Flexibility	(ASTM F137) Passes
Resistance to Heat	(ASTM F1514) Passes
Resistance to Light	(ASTM F925) Passes
Radiant Flux	(ASTM E648) Class I
Smoke Density	(ASTM E662) Passes, ≤450
Size & Squareness	(ASTM F2055) Passes, +/- 0.016 in. per linear foot
Thickness	(ASTM F386) Passes
Dimensional Stability	(ASTM F2199) Passes
Residual Indentation	(ASTM F1914) Passes
Resistance to Chemicals	(ASTM F925) Passes

Environmental

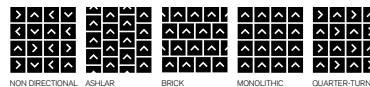
Indoor Air Quality	FloorScore®/CDPH 01350 Certified for low-VOC emissions
Material Composition	Free of Ortho Phthalates, Added Formaldehyde and Heavy Metal Stabilizers
Ingredients & Life Cycle Impacts	Environmental Product Declaration
Carbon Footprint	3rd Party Verified Carbon Neutral
Sustainability Assessment	NSF/ANSI 332, Meets Certification Guidelines
LEED v4	Contributes to IEQ: <i>Low Emitting Materials</i> ; M&R: <i>EPD and EPR</i>
End of Life	Fully Recyclable LVT to Carpet Tile Backing

Packaging

Square Feet per Carton	26.91 sq. ft. (2.5 m ²)
Pieces per Carton	10
Weight per Carton	40 lbs (18 kg)
Cartons per Pallet	40
Pallets per Truckload	20

Technical Information

Installation	See Interface LVT Installation Guidelines online
Maintenance	See Interface LVT Maintenance Guidelines online
Reclamation	Recyclable through ReEntry® - Call 1.888.733.6873 (U.S.) / 1.866.398.3191 (Canada)
Warranty	15 Year Limited Commercial Warranty
Installation Methods	Ashlar, Herringbone



All product specifications reflect averages derived from product sample testing, are subject to normal manufacturing and testing tolerances and inherent pattern variances, and may be changed without notice. For more information about these and other important attributes of the product(s) described herein, including recycled content and product warranty information, please see our full LVT product disclaimer @ interface.com.



A00301 POLISHED CEMENT



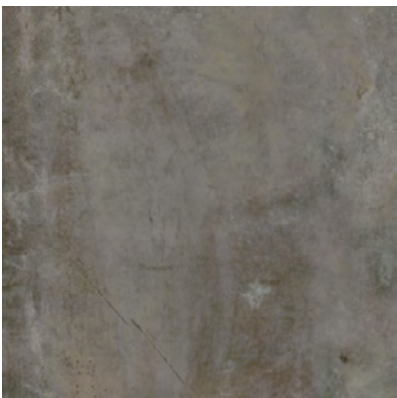
A00304 EMPERADOR GRAY



A00302 COOL POLISHED CEMENT



A00305 EMPERADOR TAUPE

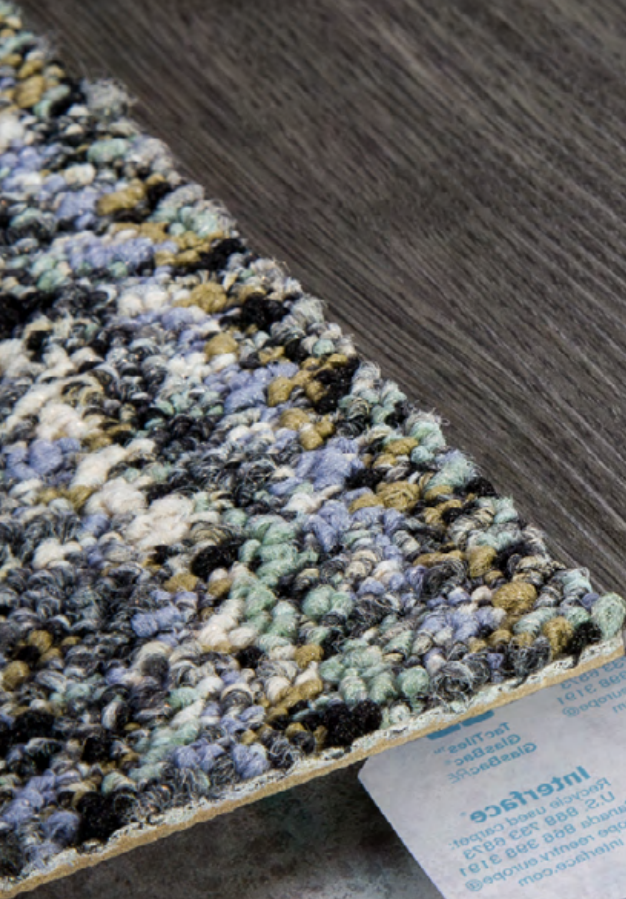


A00303 WARM POLISHED CEMENT



A00306 JERSEY MARBLE

Install Interface Modular Resilient
LVT and Modular Carpet with our
TacTiles® glue-free installation
system. No transition strip needed.



Integrated System.

Say goodbye to transition strips and doubling up. Our modular resilient floorings are made to work as a system with our modular carpet. The compatible size and height of our products allows you to integrate modular carpet for an inset rug or an adjacent field – no transition strip required. You'll avoid doubling up on materials and save money.

Glue-free Installation.

Create faster, cleaner and more flexible installations. Our TacTiles® installation system eliminates the need for glue, adhering tiles securely together to form a flexible, “floating” floor. Unlike click or adhesive-based products, simply lift, remove and replace damaged or worn tiles. The result? Less mess, less waste and virtually zero VOCs, not to mention an environmental footprint that is over 90% lower than that of traditional glue adhesives.

Circular System.

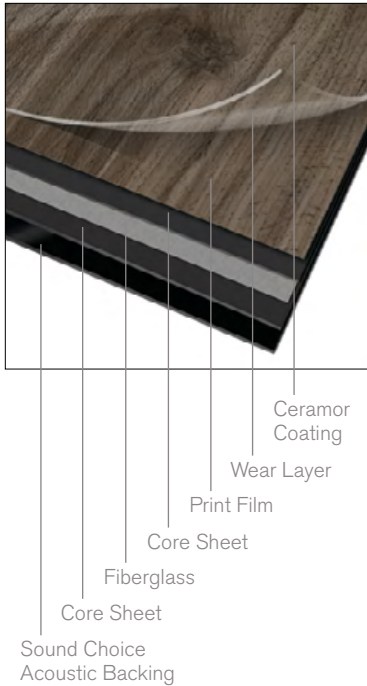
Keep flooring out of the landfill. Our modular resilient LVT is produced with a controlled material stream so it can be reclaimed and recycled into our GlasBac®RE recycled content backing through our ReEntry® program.



Noise Reduction.

Silence distractions. Interface is helping create +Positive spaces with our LVT with Sound Choice™ backing. It's Quiet Mark™ certified for its superior noise reduction qualities, offering you best-in-class performance for reduced impact sound and floor to floor sound transmission.

Why Our Modular Resilient LVT? (continued)



High Performance from Top to Bottom.

From our Ceramor™ coating to our Sound Choice™ backing, we've designed our modular resilient LVT to provide peak performance in even the most challenging work environment while also providing superior sound absorption.

Abrasion Resistance. Our Ceramor ceramic bead coating provides a durable finish that resists scratching and scuffing so your floors look better longer. Embossing adds texture to further enhance durability.

A Strong Core. Incorporating a fiberglass layer between two core sheets provides optimal dimensional stability and flexibility, allowing for a glue-free installation and the ability to move and update with ease.

Third Party Certification.

Low Carbon Option. ALL Interface LVT sold in North America is third party verified carbon neutral under our long-standing Cool Carpet™ program. Cool Carpet offsets all greenhouse gas (GHG) emissions associated with the entire lifecycle of the product.

Environmental Product Declaration (EPD). Interface LVT products are covered by an EPD. An EPD provides a comprehensive statement of product ingredients and environmental impacts based upon life cycle assessment performed to ISO standards.

Sustainable Assessment. Interface LVT meets the Silver level of the NSF/ANSI 332 Sustainability Assessment for Resilient Floor Coverings. This standard evaluates the environmental impact of resilient floor covering for its entire lifecycle.

Indoor Air Quality. All Interface modular flooring products meet the highest standards for indoor air quality. Interface LVT is FloorScore® Certified, assuring very low emissions of VOCs.

cool carpet™





PRODUCT TEXTURED STONES COLOR A00304 EMPERADOR GRAY
INSTALLED QUARTER TURN



PLEASE RECYCLE

Printed on 50% post consumer waste (PCW) fiber manufactured using wind power.

We have tried our very best to accurately represent product colors. However, due to the nature of printed materials, color of actual products may vary slightly. Please request a sample to see actual product color.

www.interface.com

United States Headquarters

1503 Orchard Hill Road
LaGrange, GA 30240
1.800.336.0225 ext.56511

Canadian Headquarters

233 Lahr Drive
Belleville, ON K8N 5S2
1.800.267.2149 ext.52128

Brazilian Headquarters

Rua Surubim, 577 - Conjuntos
73/74 7º Andar
04571-050 - São Paulo - SP
+ 55 11 2196 0900

Latin American Headquarters

Montes Urales # 415 Piso 6
Col. Lomas de Chapultepec
México City, D.F. 11000
Mexico
+ 52 55 6395 5100

CIM # IFS00762 09/2017



Mission Zero®

our promise to eliminate any negative impact our company may have on the environment by the year 2020.