



Harmonize™ & Ground Waves™

Interface®

Harmonize™ and Ground Waves™

Harmonize and Ground Waves, i2® styles in our clever 25 cm x 1 m skinny plank, combine to create a pitch-perfect look for innovative high-performing spaces that are designed to transform and inspire us.

Harmonize blends just the right notes of color, contrast and texture. Mix shades to explore your own compositions in the skinny plank format. Or, create a more muted environment when one colorway seamlessly covers the floor.

Ground Waves tunes into a more colorful range, with the introduction of two different accent bands to each of the 12 neutrals in this shared palette. The accent bands present in a varied frequency, making each tile seem unique. Add Harmonize to your Ground Waves installation and tap into an entirely new set of possibilities.

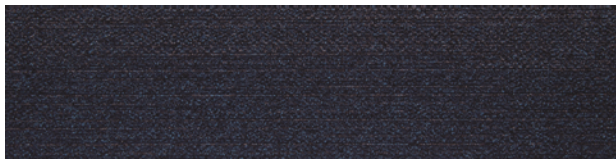






PRODUCT HARMONIZE **COLORS** 104039 COBALT, 104046 MESQUITE
PRODUCT GROUND WAVES **COLORS** 104051 COBALT/COLORS,
104059 GULL/COLORS **INSTALLED** PATTERN BY TILE

Harmonize™ Colorline



104039 COBALT



104040 MIDNIGHT



104041 ICEBERG



104042 IRON



104043 GRAVEL



104044 PEWTER



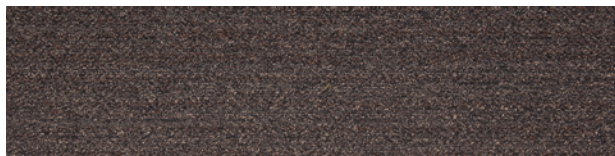
104045 LAUREL



104046 MESQUITE



104047 GULL



104048 DRIFTWOOD



104049 PRAIRIE



104050 FLAX



Specifications



Modular, 25 cm x 1 m	138720AK00
Backing System	GlasBac® Tile
Yarn Manufacturer	Aquafil
Yarn System	100% Recycled Content Type 6 Nylon
Color System	100% Solution Dyed
Construction	Tufted Textured Loop
Preservative Protection	Intersept®
Soil/Stain Protection	Protekt ² ®
Pile Thickness	0.106 in., 2.7 mm
Pile Density	5,434
Fiber Modification Ratio	1.9 - 2.2
Total Recycled Content	61%
Indoor Air Quality	CRI Green Label Plus #GLP0820



ASHLAR



BRICK



HERRINGBONE

PRODUCT HARMONIZE COLOR
104044 PEWTER **INSTALLED ASHLAR**



Specifications

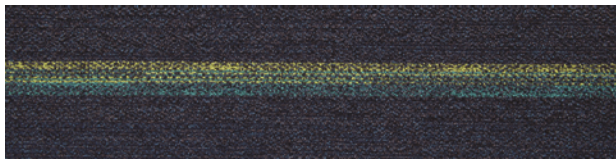


Modular, 25 cm x 1 m	138730AK00
Backing System	GlasBac® Tile
Yarn Manufacturer	Aquafil
Yarn System	100% Recycled Content Type 6 Nylon
Color System	100% Solution Dyed
Construction	Tufted Textured Loop
Preservative Protection	Intersept®
Soil/Stain Protection	Protekt ^{2.0}
Pile Thickness	0.088 in., 2.2 mm
Pile Density	6,545
Fiber Modification Ratio	1.9 - 2.2
Total Recycled Content	61%
Indoor Air Quality	CRI Green Label Plus #GLP0820

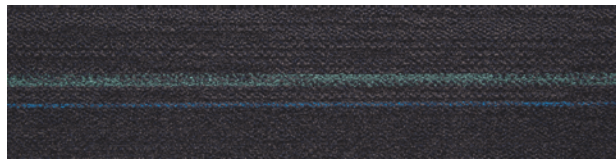


PRODUCT GROUND WAVES **COLOR**
104056 PEWTER/COLORS **INSTALLED** ASHLAR

Ground Waves™ Colorline



104051 COBALT/COLORS



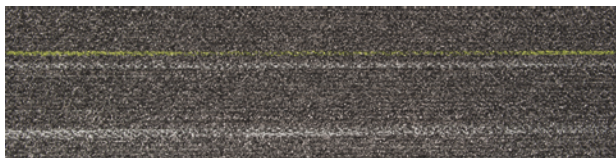
104052 MIDNIGHT/COLORS



104053 ICEBERG/COLORS



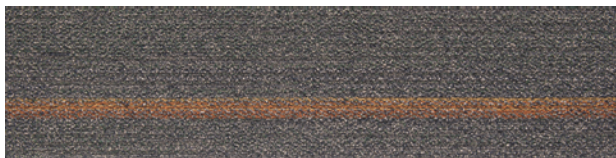
104054 IRON/COLORS



104055 GRAVEL/COLORS



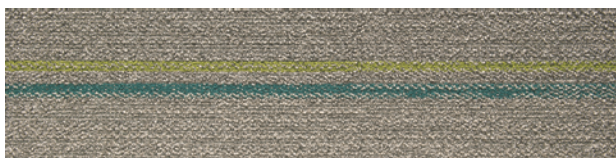
104056 PEWTER/COLORS



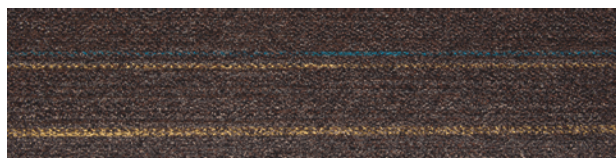
104057 LAUREL/COLORS



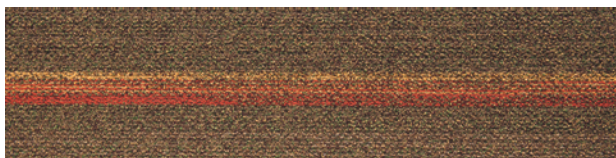
104058 MESQUITE/COLORS



104059 GULL/COLORS



104060 DRIFTWOOD/COLORS



104061 PRAIRIE/COLORS



104062 FLAX/COLORS

Why Our Modular Carpet?



i2® Modular Carpet

Minimize Waste & Save Money.

Interface's i2 styles have mergeable dye lots. That means i2 tiles from different dye lots always blend with tiles of the same color, even when individual tiles are selectively replaced years later. This minimizes the need for attic stock and saves money. And i2 styles that install non directionally generate an average of only 1.5% installation waste as compared to 3-4% for typical modular carpet and an average of 14% for traditional roll carpet.



Cool Carpet™

Help Stop Global Warming and Earn

a LEED® Innovation Credit. ALL Interface modular carpet sold in North America is third party verified climate neutral Cool Carpet. Cool Carpet zeros out all greenhouse gas (GHG) emissions associated with the entire lifecycle of your carpet. And climate neutral verified Cool Carpet may be eligible for a USGBC or CaGBC LEED Innovation Credit.



TacTiles®

No Glue Installation. Our revolutionary

TacTiles installation system eliminates the need for glue, adhering tiles securely together to form a floor that "floats" for greater flexibility, easier replacement and long-term performance. The result? Less mess, less waste and virtually no VOCs, not to mention an environmental footprint that is over 90% lower than that of traditional glue adhesives.

Samples

Order samples at www.interface.com. You'll receive email order confirmations, 24/7 access to order status and more. Not near a computer? You can also request samples by calling one of the numbers below.

United States 1.877.605.1500	Canada 1.866.398.3192
Brazil + 55 11 2196 0902	Latin America + 55 11 2196 0900

www.interface.com

Register at www.interface.com to:

- Order samples
- View carpet in a variety of room scenes and even upload your own room
- Use our LEED Calculator
- Check order status and inventory availability
- Sign up to get the latest information on Interface products and news

InterCircle™ Sample Return

Help us close the loop on the carpet sampling process. Through our InterCircle Sample Return program, sample materials stay out of the landfill and are re-used as samples until it is time to recycle them into new carpet. By reducing sample production material and diverting old materials from the landfill, we can reduce our overall environmental footprint.

Call 1.877.605.1500 (U.S.) or 1.866.398.3192 (Canada) to order a sample return bag with a prepaid return label.

Third Party Certification

cool carpet™

Cool Carpet – Our third party verified carbon offset program zeroes out all greenhouse gas (GHG) emissions associated with the entire lifecycle of your carpet.



Environmental Product Declaration (EPD) – A statement of product ingredients and environmental impacts over the entire life cycle of a product. A comprehensive life cycle assessment (LCA) is performed to ISO standards to develop an EPD, after which both the EPD and LCA must be third party verified.



Sustainable Assessment for Carpet – The only carpet sustainability standard in North America that evaluates the environmental impact of carpet for its entire lifecycle.



CRI Green Label Plus – An independent testing program that identifies carpet and adhesives with very low emissions of VOCs to help improve indoor air quality.



Intersept®

Mold Protection. Our proprietary preservative, Intersept, protects our modular carpet against mold growth and odor-causing bacteria — guaranteed. Intersept treated carpet, with proper maintenance, shows no mold or bacterial growth when tested per the ASTM E2471 Standard Test Method. Intersept is low in toxicity, water insoluble and contains no arsenic, heavy metals, phenols or formaldehyde.



ReEntry® 2.0

Recyclable is Now a Reality. Our ReEntry 2.0 program uses innovative technology that gives us the ability to cleanly separate the face fiber and backing of nearly any carpet type. Separated Type 6 and 6,6 nylon are recycled into new 6 and 6,6 nylon, while separated GlasBac® and similar competitor backings are recycled into new GlasBac®RE non-virgin PVC backing using our Cool Blue™ technology. The result? Products with up to 81% total recycled content, including as much as 35% post-consumer content.



Sustainable Choice

Environmental Responsibility. Interface was the industry's first to earn an EPD (Environmental Product Declaration), which evaluates consistent factors based on full lifecycle assessment (LCA). We achieved an EPD based on our Convert™ products and have now expanded our EPDs into four categories covering more than 90% of our products.

In addition, all Interface products with GlasBacRE backing meet the Platinum level of the NSF/ANSI 140 Sustainable Assessment for Carpet. GlasBac or NexStep® backed products meet the Gold level. All may contribute toward a USGBC or CaGBC LEED Innovation Credit.

All product specifications reflect averages derived from product sample testing, are subject to normal manufacturing and testing tolerances and inherent pattern variances, and may be changed without notice. For more information about these and other important attributes of the product(s) described herein, including recycled content and product warranty information, please see www.interface.com/disclaimer.



RECYCLED
Paper made from
recycled material
FSC® C009723



PLEASE RECYCLE

Printed on 50% post consumer waste (PCW) fiber manufactured using wind power.

We have tried our very best to accurately represent product colors. However, due to the nature of printed materials, color of actual products may vary slightly. Please request a sample to see actual product color.

www.interface.com

United States Headquarters

1503 Orchard Hill Road
LaGrange, GA 30240
1.800.336.0225 ext.6511

Canadian Headquarters

233 Lahr Drive
Belleville, ON K8N 5S2
1.800.267.2149 ext.2128

Latin American Headquarters

Rua Surubim, 577 - Conjuntos
73/74 7º Andar
04571-050 - São Paulo - SP
+ 55 11 2196 0900

CIM # IFS00643 02/2014



Mission Zero:

our promise to eliminate any
negative impact our company
may have on the environment
by the year 2020.