



Human Nature™ Collection

Interface®

Human Nature™ Collection

It's human nature to be creative. As designers we know that when we follow nature's example, designing spaces that ignite our senses through light, color, texture and detail, we also spark the creative spirit in each of us.

Human Nature Collection was designed as a beautiful foundation for those spaces, made up of five different textures in 25cm x 1m skinny planks. Borrowing from natural elements, HN810™, HN850™ and HN840™ placed in sequence blend seamlessly in an organic movement that shows no hint of the corners or edges of the tile. HN820™ and HN830™ extend the range from very low profile to wildly-full and neutral to colorful.

Like everything in the natural world, transitions are varied. The skinny plank format lends itself to fluid transitions with its graceful, elongated dimensions. More dynamic connections are made when mixing hues and textures with the bold geometry of the tile.

Of course, Human Nature Collection is made of up to 81% total recycled content, including 100% recycled nylon made in part from reclaimed fishing nets. And when its useful life is through, it can be recycled through Interface's ReEntry® 2.0 recycling process.

Your turn. Be creative – it's in your nature.







PRODUCT HN810 COLOR 104215 SLATE PRODUCT HN850 COLOR 104206 NICKEL
PRODUCT HN830 COLOR 104238 MAIZE INSTALLED HERRINGBONE



PRODUCT HN810 COLOR 104214 NICKEL PRODUCT HN840 COLOR 104222 NICKEL
PRODUCT HN850 COLOR 104206 NICKEL INSTALLED ASHLAR

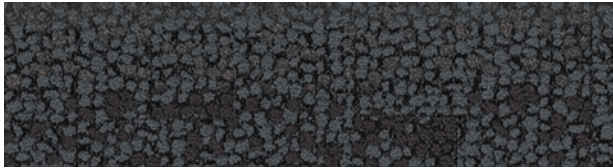


PRODUCT HN820 COLOR 104234 SHALE PRODUCT HN840 COLOR 104226 SHALE
INSTALLED PATTERN BY TILE

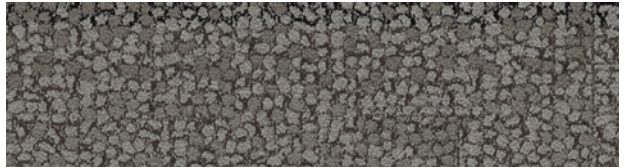


PRODUCT HN840 COLOR 104222 NICKEL INSTALLED ASHLAR

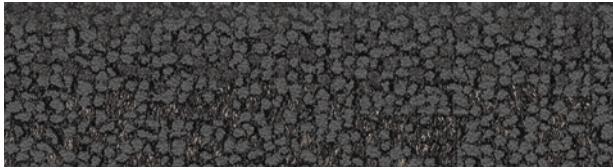
HN840™ Colorline



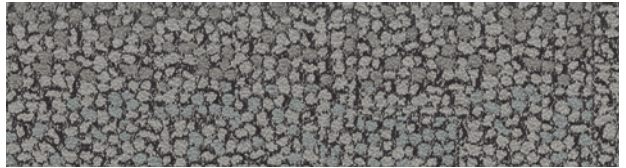
104221 FLINT



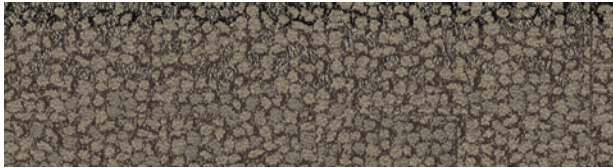
104222 NICKEL



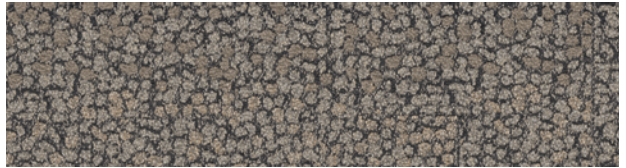
104223 SLATE



104224 LIMESTONE



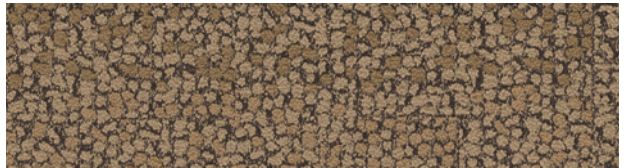
104225 PUMICE



104226 SHALE



104227 EARTH



104228 TRAVERTINE

Specifications **i2**

Modular, 25 cm x 1 m	127620AK0H
Backing System	GlasBac®RE Tile
Yarn Manufacturer	Aquafil
Yarn System	100% Recycled Content Type 6 Nylon
Color System	100% Solution Dyed
Construction	Tufted Pattern Loop
Preservative Protection	Intersept®
Soil/Stain Protection	Protekt ² ®
Pile Thickness	0.202 in., 5.1 mm
Pile Density	5,168
Total Recycled Content	81% (35% Post-Consumer)
Indoor Air Quality	CRI Green Label Plus #GLP0820



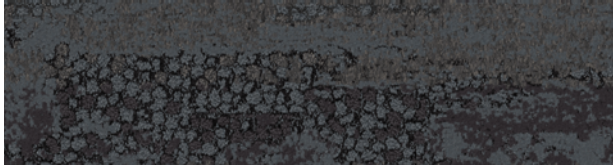
ASHLAR

HERRINGBONE

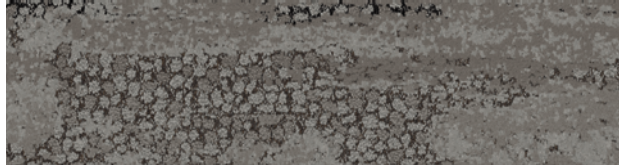


PRODUCT HN850 COLOR 104207 SLATE INSTALLED ASHLAR

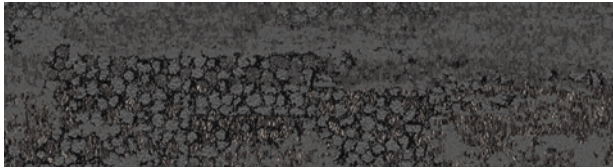
HN850™ Colorline



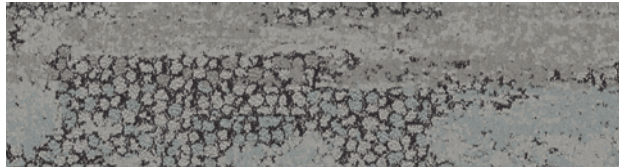
104205 FLINT



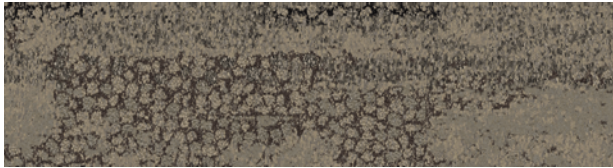
104206 NICKEL



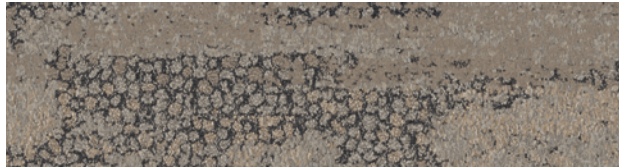
104207 SLATE



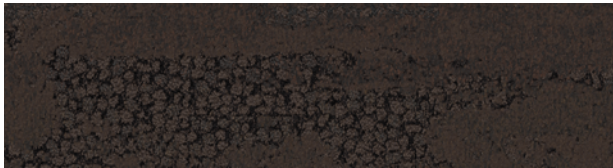
104208 LIMESTONE



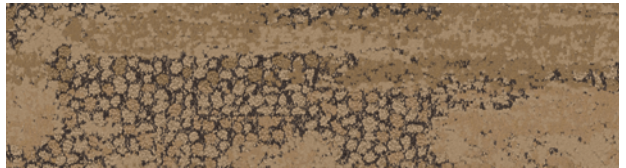
104209 PUMICE



104210 SHALE



104211 EARTH



104212 TRAVERTINE

Specifications **i2**

Modular, 25 cm x 1 m	127600AK0H
Backing System	GlasBac®RE Tile
Yarn Manufacturer	Aquafil
Yarn System	100% Recycled Content Type 6 Nylon
Color System	100% Solution Dyed
Construction	Tufted Pattern Loop
Preservative Protection	Intersept®
Soil/Stain Protection	Protekt2®
Pile Thickness	0.194 in., 4.9 mm
Pile Density	5,938
Total Recycled Content	81% (35% Post-Consumer)
Indoor Air Quality	CRI Green Label Plus #GLP0820

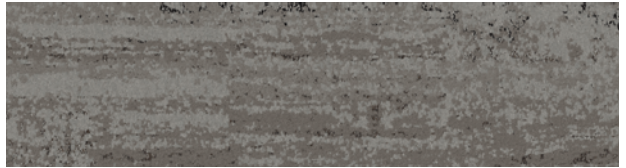




HN810™ Colorline



104213 FLINT



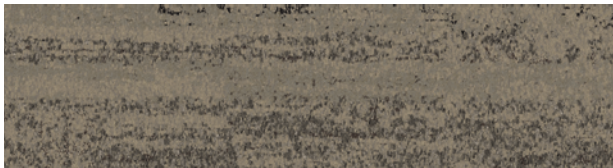
104214 NICKEL



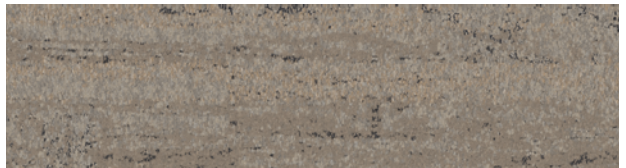
104215 SLATE



104216 LIMESTONE



104217 PUMICE



104218 SHALE



104219 EARTH



104220 TRAVERTINE

Specifications **i2**

Modular, 25 cm x 1 m	127610AK0H
Backing System	GlasBac®RE Tile
Yarn Manufacturer	Aquafil
Yarn System	100% Recycled Content Type 6 Nylon
Color System	100% Solution Dyed
Construction	Tufted Sheared
Preservative Protection	Intersept®
Soil/Stain Protection	Protekt ² ®
Pile Thickness	0.212 in., 5.4 mm
Pile Density	5,774
Total Recycled Content	81% (34% Post-Consumer)
Indoor Air Quality	CRI Green Label Plus #GLP0820

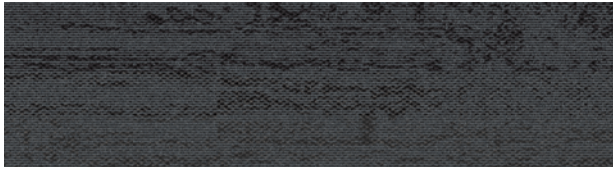


ASHLAR

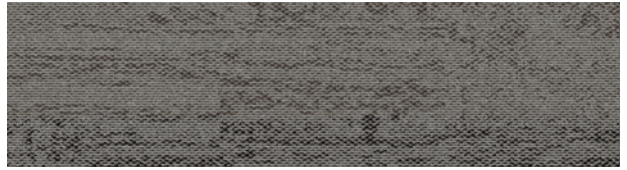
HERRINGBONE



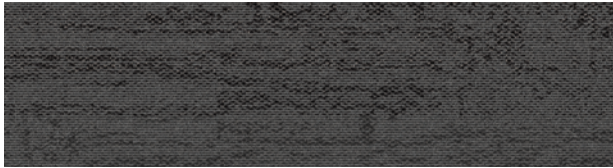
HN820™ Colorline



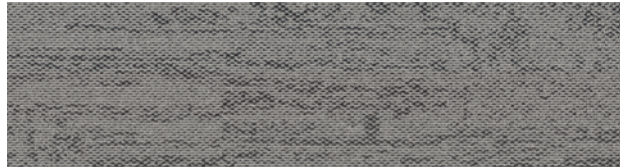
104229 FLINT



104230 NICKEL



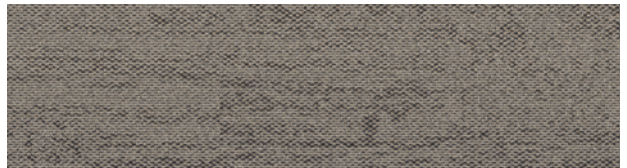
104231 SLATE



104232 LIMESTONE



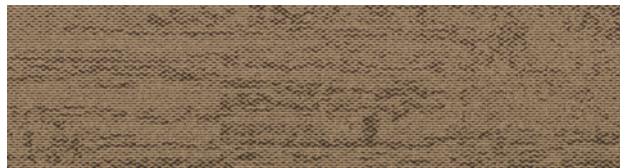
104233 PUMICE



104234 SHALE



104235 EARTH



104236 TRAVERTINE

Specifications **i2**

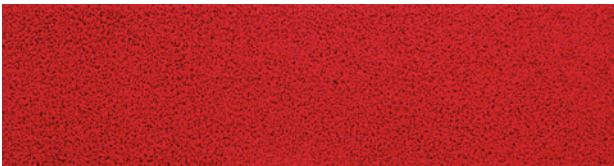
Modular, 25 cm x 1 m	124980AK0H
Backing System	GlasBac®RE Tile
Yarn Manufacturer	Aquafil
Yarn System	100% Recycled Content Type 6 Nylon
Color System	100% Solution Dyed
Construction	Tufted Cut & Loop
Preservative Protection	Intersept®
Soil/Stain Protection	Protekt ² ®
Pile Thickness	0.124 in., 3.1 mm
Pile Density	6,387
Total Recycled Content	79% (35% Post-Consumer)
Indoor Air Quality	CRI Green Label Plus #GLP0820





PRODUCT HN830 COLOR 104242 KIWI INSTALLED ASHLAR

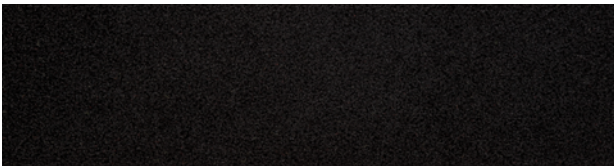
HN830™ Colorline



104237 PERSIMMON



104238 MAIZE



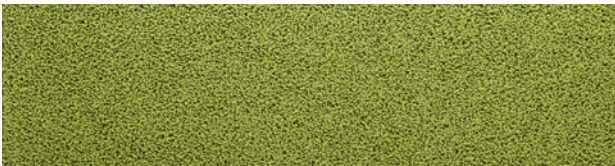
104239 BLACK



104240 COBALT



104241 CLEMENTINE



104242 KIWI



104243 PISTACHIO



104244 BONE

Specifications

Modular, 25 cm x 1 m	126020AK00
Backing System	GlasBac® Tile
Yarn Manufacturer	Aquafil
Yarn System	100% Recycled Content Type 6 Nylon
Color System	100% Solution Dyed
Construction	Tufted Cut Pile
Preservative Protection	Intersept®
Soil/Stain Protection	Protekt2®
Pile Thickness	0.309 in., 7.8 mm
Pile Density	4,893
Total Recycled Content	69%
Indoor Air Quality	CRI Green Label Plus #GLP0820





PRODUCT HN810 COLORS 104213 FLINT, 104215 SLATE INSTALLED ASHLAR

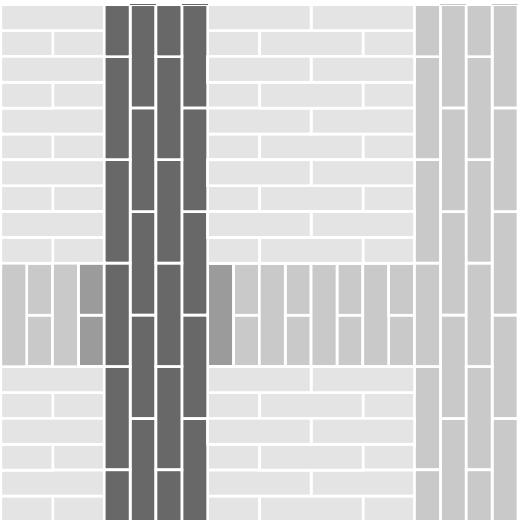


PRODUCT HN810 COLOR 104216 LIMESTONE PRODUCT HN840 COLOR 104224 LIMESTONE
PRODUCT HN850 COLOR 104208 LIMESTONE PRODUCT HN830 COLOR 104241 CLEMENTINE INSTALLED ASHLAR

Design Ideas Below are floor layouts showing how to create the design ideas shared in several of the images featured in this brochure.

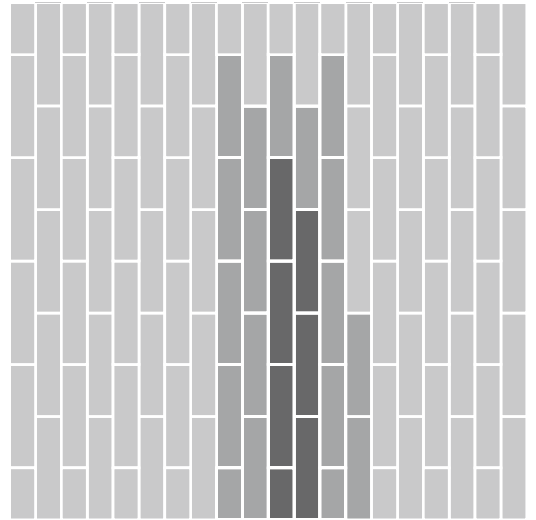


PRODUCT HN810 COLOR 104216 LIMESTONE PRODUCT HN840 COLOR 104224 LIMESTONE PRODUCT HN850 COLOR 104208 LIMESTONE
PRODUCT HN830 COLOR 104242 KIWI INSTALLED ASHLAR

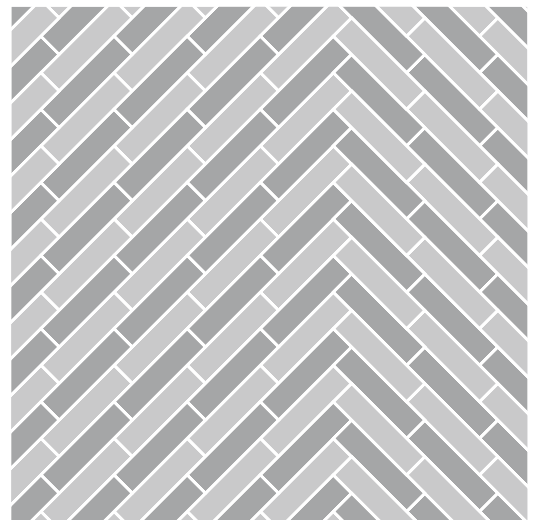


PRODUCT HN810 COLOR 104215 SLATE PRODUCT HN850 COLOR 104206 NICKEL PRODUCT HN830 COLOR 104238 MAIZE
INSTALLED HERRINGBONE



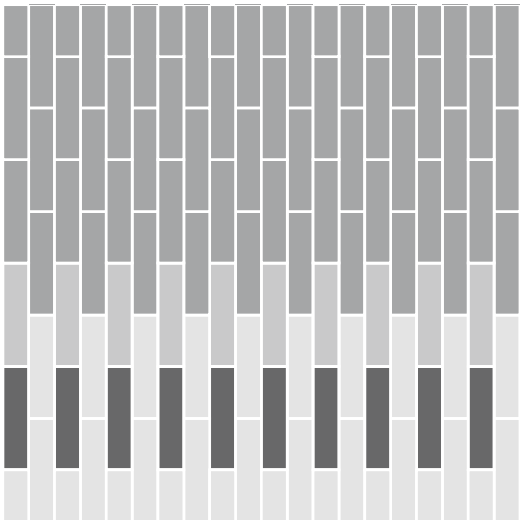
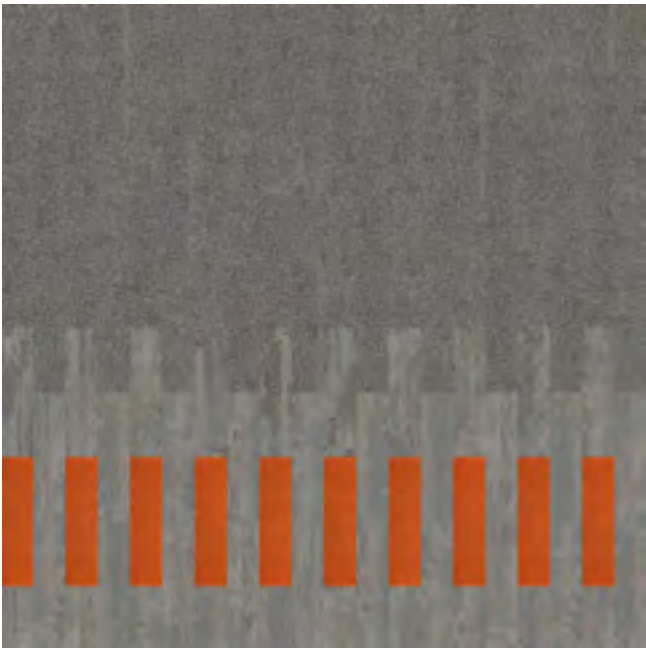


PRODUCT HN810 **COLOR** 104214 NICKEL **PRODUCT** HN840 **COLOR** 104222 NICKEL **PRODUCT** HN810 **COLOR** 104206 NICKEL
INSTALLED ASHLAR



PRODUCT HN820 **COLOR** 104234 SHALE **PRODUCT** HN840 **COLOR** 104226 SHALE **INSTALLED PATTERN BY TILE**

Design Ideas Below are floor layouts showing how to create the design ideas shared in several of the images featured in this brochure.



PRODUCT HN810 COLOR 104216 LIMESTONE PRODUCT HN840 COLOR 104224 LIMESTONE PRODUCT HN850 COLOR 104208 LIMESTONE
PRODUCT HN830 COLOR 104241 CLEMENTINE INSTALLED ASHLAR

All product specifications reflect averages derived from product sample testing, are subject to normal manufacturing and testing tolerances and inherent pattern variances, and may be changed without notice. For more information about these and other important attributes of the product(s) described herein, including recycled content and product warranty information, please see www.interface.com/disclaimer.

Why Our Modular Carpet?



Modular Carpet Tile

Performance and Flexibility. Interface's modular carpet tile sets the industry standard for performance. Tiles are designed to stay on the floor with no upcurl, tapping or rippling. Our square and plank tiles are easier to handle, install and maintain. They install with just 3-4% waste – and as little as 1.5% for i2® non directional styles – compared to an average 14% for traditional roll carpet. And our i2 styles are mergeable so tiles from multiple dye lots will always blend, even when selectively replaced years later.



Cool Carpet™

Help Stop Global Warming and Earn a LEED® Innovation Credit. ALL Interface modular carpet sold in North America is third party verified climate neutral Cool Carpet. Cool Carpet zeros out all greenhouse gas (GHG) emissions associated with the entire lifecycle of your carpet. And climate neutral verified Cool Carpet may be eligible for a USGBC or CaGBC LEED Innovation Credit.



TacTiles®

No Glue Installation. Our revolutionary TacTiles installation system eliminates the need for glue, adhering tiles securely together to form a floor that "floats" for greater flexibility, easier replacement and long-term performance. The result? Less mess, less waste and virtually no VOCs, not to mention an environmental footprint that is over 90% lower than that of traditional glue adhesives.



Intersept®

Mold Protection. Our proprietary preservative, Intersept, protects our modular carpet against mold growth and odor-causing bacteria — guaranteed. Intersept treated carpet, with proper maintenance, shows no mold or bacterial growth when tested per the ASTM E2471 Standard Test Method. Intersept is low in toxicity, water insoluble and contains no arsenic, heavy metals, phenols or formaldehyde.



ReEntry® 2.0

Recyclable is Now a Reality. Our ReEntry 2.0 program uses innovative technology that gives us the ability to cleanly separate the face fiber and backing of nearly any carpet type. Separated Type 6 and 6,6 nylon are recycled into new 6 and 6,6 nylon, while separated GlasBac® and similar competitor backings are recycled into new GlasBac®RE non-virgin PVC backing using our Cool Blue™ technology. The result? Products with up to 81% total recycled content, including as much as 35% post-consumer content.



Sustainable Choice

Environmental Responsibility. Interface was the industry's first to earn an EPD (Environmental Product Declaration), which evaluates consistent factors based on full lifecycle assessment (LCA). We achieved an EPD based on our Convert™ products and have now expanded our EPDs into four categories covering more than 90% of our products.

In addition, all Interface products with GlasBacRE backing meet the Platinum level of the NSF/ANSI 140 Sustainable Assessment for Carpet. GlasBac or NexStep® backed products meet the Gold level. All may contribute toward a USGBC or CaGBC LEED Innovation Credit.

Third Party Certification

cool carpet™

Cool Carpet – Our third party verified carbon offset program zeroes out all greenhouse gas (GHG) emissions associated with the entire lifecycle of your carpet.



Environmental Product Declaration

(EPD) – A statement of product ingredients and environmental impacts over the entire life cycle of a product. A comprehensive life cycle assessment (LCA) is performed to ISO standards to develop an EPD, after which both the EPD and LCA must be third party verified.



Sustainable Assessment for

Carpet – The only carpet sustainability standard in North America that evaluates the environmental impact of carpet for its entire lifecycle.



CRI Green Label Plus – An

independent testing program that identifies carpet and adhesives with very low emissions of VOCs to help improve indoor air quality.

www.interface.com

United States Headquarters

1503 Orchard Hill Road
LaGrange, GA 30240
1.800.336.0225 ext.6511

Canadian Headquarters

233 Lahr Drive
Belleville, ON K8N 5S2
1.800.267.2149 ext.2128

Brazilian Headquarters

Rua Surubim, 577 - Conjuntos
73/74 7º Andar
04571-050 - São Paulo - SP
+ 55 11 2196 0900

Latin American Headquarters

Montes Urales # 415 Piso 6
Col. Lomas de Chapultepec
México City, D.F. 11000
Mexico
+ 52 55 6395 5100

CIM # IFS00659 06/2014



Mission Zero:

our promise to eliminate any
negative impact our company
may have on the environment
by the year 2020.