



Cubic™ & Cubic Colours™

Interface®

It's only in our synthetic world that we want uniform perfection – one shade, no variation. If nature doesn't work that way, then why should we? Like fallen leaves on the forest floor, stones in the riverbed and flowers in a field, each Cubic and Cubic Colours carpet tile is unique; yet when installed, they blend into a cohesive pattern. As two of Interface's groundbreaking i2® non directional products, Cubic and Cubic Colours can be installed using tiles from multiple dye lots and tiles can be set in any direction, which means there's less waste during production and installation. Cubic is offered in 33 neutral colorways. And, with Cubic Colours' dazzling selection of 21 colors ranging from bold primaries to candy-coated pastels to rich blues and greens, you can add a vibrant flair to any environment from retail to a pediatric clinic to the corporate think-tank.



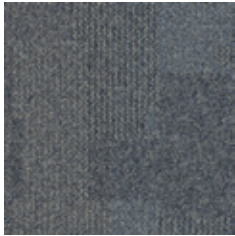


PRODUCT CUBIC COLOR 4295 SYMMETRY INSTALLED NON DIRECTIONAL

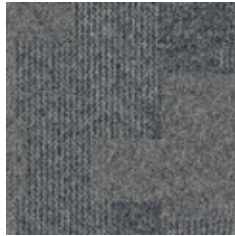


PRODUCT CUBIC COLOR 6386 HORIZONTAL INSTALLED NON DIRECTIONAL

Cubic™ Colorline



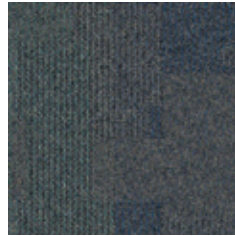
CUBIC 4287 SHAPE
CUBIC + 172422 SHAPE



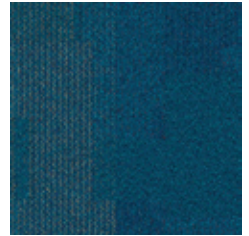
CUBIC 4288 GEOMETRY
CUBIC + 178448 GEOMETRY



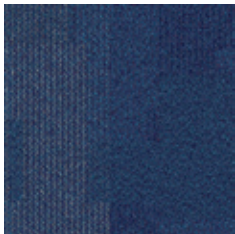
CUBIC 4289 MATRIX
CUBIC + 178449 MATRIX



CUBIC 4290 PERIMETER
CUBIC + 178450 PERIMETER



CUBIC 4291 SQUARE
CUBIC + 171794 SQUARE



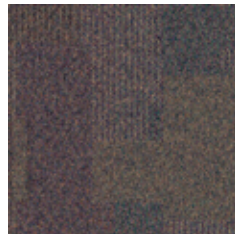
CUBIC 4292 AREA
CUBIC + 172673 AREA



CUBIC 4293 GRID
CUBIC + 178451 GRID



CUBIC 4294 SURFACE
CUBIC + 178452 SURFACE



CUBIC 4295 SYMMETRY
CUBIC + 178453 SYMMETRY



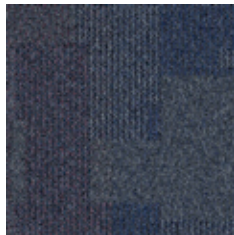
CUBIC 4296 TRANSVERSE
CUBIC + 178454 TRANSVERSE



CUBIC 4851 MEASUREMENT
CUBIC + 178455 MEASUREMENT



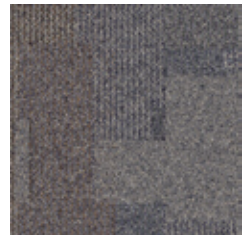
CUBIC 4852 INTERIOR
CUBIC + 178456 INTERIOR



CUBIC 4853 ANGLE
CUBIC + 178457 ANGLE



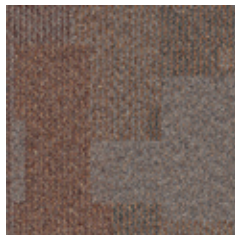
CUBIC 4855 OPTIC
CUBIC + 178458 OPTIC



CUBIC 4856 STRUCTURE
CUBIC + 178459 STRUCTURE



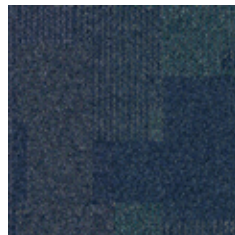
CUBIC 4857 FUNCTIONAL
CUBIC + 178460 FUNCTIONAL



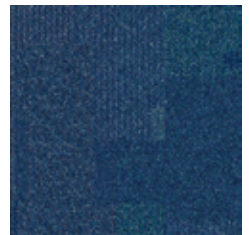
CUBIC 4858 FORM
CUBIC + 172058 FORM



CUBIC 4860 AXIS
CUBIC + 178461 AXIS



CUBIC 6383 BALANCE
CUBIC + 178462 BALANCE



CUBIC 6384 COMPOSITION
CUBIC + 178463 COMPOSITION



CUBIC 6385 VERTICAL
CUBIC + 178464 VERTICAL



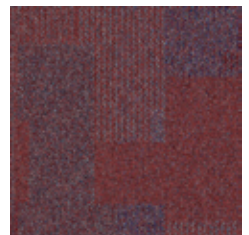
CUBIC 6386 HORIZONTAL
CUBIC + 178465 HORIZONTAL



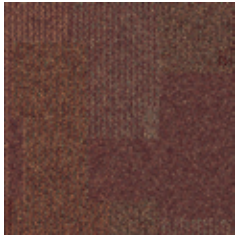
CUBIC 6387 DEPTH
CUBIC + 178466 DEPTH



CUBIC 6388 CONCEPT
CUBIC + 178467 CONCEPT



CUBIC 6389 SUPPORTS
CUBIC + 178468 SUPPORTS



CUBIC 6390 LENGTH
CUBIC + 178469 LENGTH



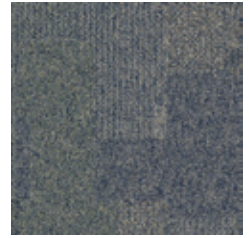
CUBIC 6391 WIDTH
CUBIC + 178470 WIDTH



CUBIC 6392 DIMENSION
CUBIC + 178471 DIMENSION



CUBIC 6393 HEIGHT
CUBIC + 178313 HEIGHT



CUBIC 6394 DIAGONAL
CUBIC + 178472 DIAGONAL



CUBIC 6395 CONSTRUCTION
CUBIC + 178473 CONSTRUCTION



CUBIC 6396 MOVEMENT
CUBIC + 178474 MOVEMENT



CUBIC 6397 PURPOSE
CUBIC + 178475 PURPOSE

Specifications Cubic™



| | |
|--------------------------|------------------------------------|
| Modular, 50 cm x 50 cm | 1380102500 |
| Backing System | GlasBac® Tile |
| Yarn Manufacturer | Aquafil |
| Yarn System | 100% Recycled Content Type 6 Nylon |
| Color System | 100% Solution Dyed |
| Construction | Tufted Textured Loop |
| Preservative Protection | Intersept® |
| Soil/Stain Protection | Protekt2® |
| Pile Thickness | 0.093 in., 2.4 mm |
| Pile Density | 6,968 |
| Fiber Modification Ratio | 1.9 - 2.2 |
| Total Recycled Content | 71% |
| Indoor Air Quality | CRI Green Label Plus #GLP0820 |



NON-DIRECTIONAL

Cubic™+



| | |
|--------------------------|------------------------------------|
| Modular, 50 cm x 50 cm | 19J5102500 |
| Backing System | GlasBac® Tile |
| Yarn Manufacturer | Aquafil |
| Yarn System | 100% Recycled Content Type 6 Nylon |
| Color System | 100% Solution Dyed |
| Construction | Tufted Textured Loop |
| Preservative Protection | Intersept® |
| Soil/Stain Protection | Protekt2® |
| Pile Thickness | 0.115 in, 2.9 mm |
| Pile Density | 6,261 |
| Fiber Modification Ratio | 1.9 - 2.2 |
| Total Recycled Content | 71% |
| Indoor Air Quality | CRI Green Label Plus #GLP0820 |



NON-DIRECTIONAL

Also available on some state government contracts.

Cubic Colours™ Colorline



7248 PARROT



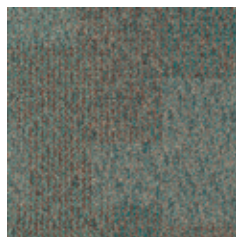
7249 BLUE LAGOON



7251 IRIDESCENT



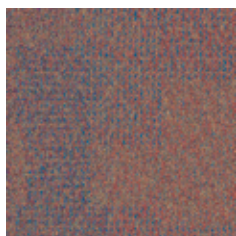
7252 ABALONE



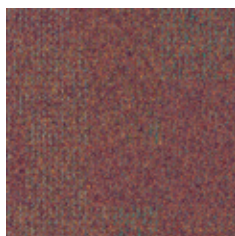
7253 CHAMELEON



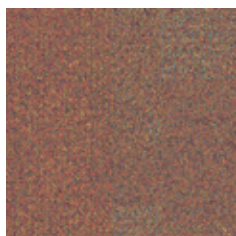
7254 NORTHERN LIGHTS



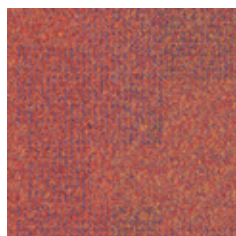
7255 MOSAIC



7256 KALEIDOSCOPE



7257 TAPESTRY



7258 CARNIVAL



7259 PAINTED DESERT



7260 SUNFLOWER



7261 YELLOW



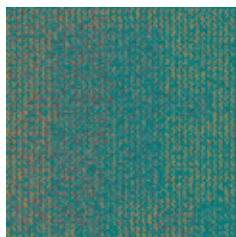
7262 ORANGE



7263 RED



7264 GREEN



7265 TEAL



7266 BLUE



7267 VIOLET



7268 MAGENTA



7269 BLACK

Specifications



| | |
|--------------------------|------------------------------------|
| Modular, 50 cm x 50 cm | 1382902500 |
| Backing System | GlasBac® Tile |
| Yarn Manufacturer | Aquafil |
| Yarn System | 100% Recycled Content Type 6 Nylon |
| Color System | 100% Solution Dyed |
| Construction | Tufted Textured Loop |
| Preservative Protection | Intersept® |
| Soil/Stain Protection | Protekt2® |
| Pile Thickness | 0.093 in., 2.4 mm |
| Pile Density | 6,968 |
| Fiber Modification Ratio | 1.9 - 2.2 |
| Total Recycled Content | 71% |
| Indoor Air Quality | CRI Green Label Plus #GLP0820 |



NON-DIRECTIONAL

All product specifications reflect averages derived from product sample testing, are subject to normal manufacturing and testing tolerances and inherent pattern variances, and may be changed without notice. For more information about these and other important attributes of the product(s) described herein, including recycled content and product warranty information, please see www.interface.com/disclaimer.



PRODUCT CUBIC COLOURS COLOR 7269 BLACK INSTALLED NON DIRECTIONAL

Why Our Modular Carpet?



i2® Modular Carpet

Minimize Waste & Save Money.

Interface's i2 styles have mergeable dye lots. That means i2 tiles from different dye lots always blend with tiles of the same color, even when individual tiles are selectively replaced years later. This minimizes the need for attic stock and saves money. And i2 styles that install non directionally generate an average of only 1.5% installation waste as compared to 3-4% for typical modular carpet and an average of 14% for traditional roll carpet.



Cool Carpet™

The Low Carbon Option

Help stop climate change. ALL Interface modular carpet sold in North America is third party verified climate neutral Cool Carpet. We start by using low-carbon materials and manufacturing processes, then Cool Carpet zeros out all remaining greenhouse gas (GHG) emissions associated with the entire lifecycle of your carpet, from raw material extraction through use and recycling.



TacTiles®

No Glue Installation. Our revolutionary TacTiles installation system eliminates the need for glue, adhering tiles securely together to form a floor that "floats" for greater flexibility, easier replacement and long-term performance. The result? Less mess, less waste and virtually no VOCs, not to mention an environmental footprint that is over 90% lower than that of traditional glue adhesives.



Intersept®

Mold Protection. Our proprietary preservative, Intersept, protects our modular carpet against mold growth and odor-causing bacteria — guaranteed. Intersept treated carpet, with proper maintenance, shows no mold or bacterial growth when tested per the ASTM E2471 Standard Test Method. Intersept is low in toxicity, water insoluble and contains no arsenic, heavy metals, phenols or formaldehyde.



ReEntry® 2.0

Recyclable is Now a Reality. Through our ReEntry program and partnerships with our fiber suppliers and recycling centers throughout North America, separated Type 6 and 6,6 nylon are recycled into new 6 and 6,6 nylon, while separated GlasBac® and similar competitor backings are recycled into GlasBacRE non-virgin PVC backing using our Cool Blue™ technology. The result? Products with up to 89% total recycled content, including as much as 27% post-consumer content.



Sustainable Choice

Environmental Responsibility. More than 95% of Interface products manufactured in the Americas carry the GreenCircle Certified Environmental Facts label, which has verified that standard Interface products are manufactured using 99% renewable energy and offer a minimum of 66% and 80% total recycled content when backed with GlasBac and GlasBacRE backing respectively. All Interface products include published HPDs (Health Product Declarations) or Declare Labels and more than 99% have a published EPD (Environmental Product Declaration) globally, and all products produced in the Americas are NSF/ANSI 140 gold or platinum certified.

Third Party Certification

cool carpet™

Cool Carpet – Our third party verified carbon offset program zeroes out all greenhouse gas (GHG) emissions associated with the entire lifecycle of your carpet.



Environmental Product Declaration (EPD) – A statement of product ingredients and environmental impacts over the entire life cycle of a product. A comprehensive life cycle assessment (LCA) is performed to ISO standards to develop an EPD, after which both the EPD and LCA must be third party verified.



Sustainable Assessment for Carpet – The only carpet sustainability standard in North America that evaluates the environmental impact of carpet for its entire lifecycle.



CRI Green Label Plus – An independent testing program that identifies carpet and adhesives with very low emissions of VOCs to help improve indoor air quality.

www.interface.com

United States Headquarters

1503 Orchard Hill Road
LaGrange, GA 30240
1.800.336.0225 ext.56511

Canadian Headquarters

233 Lahr Drive
Belleville, ON K8N 5S2
1.800.267.2149 ext.52128

Brazilian Headquarters

Rua Surubim, 577 - Conjuntos
73/74 7o Andar
04571-050 - São Paulo - SP
+ 55 11 2196 0900

Latin American Headquarters

Montes Urales # 415 Piso 6
Col. Lomas de Chapultepec
México City, D.F. 11000
Mexico
+ 52 55 6395 5100

CIM # IFS00625 10/2017



Mission Zero:

our promise to eliminate any negative impact our company may have on the environment by the year 2020.