

A modern interior space featuring two white armchairs with curved backs and metal legs. The floor is covered in a carpet with a complex, multi-colored geometric pattern in shades of grey, green, and blue. Large windows in the background offer a view of a city skyline with various buildings, including a prominent brick building on the left. The text "Street Smart Collection" is written vertically in white on the left side of the image.

Street Smart Collection

Interface®

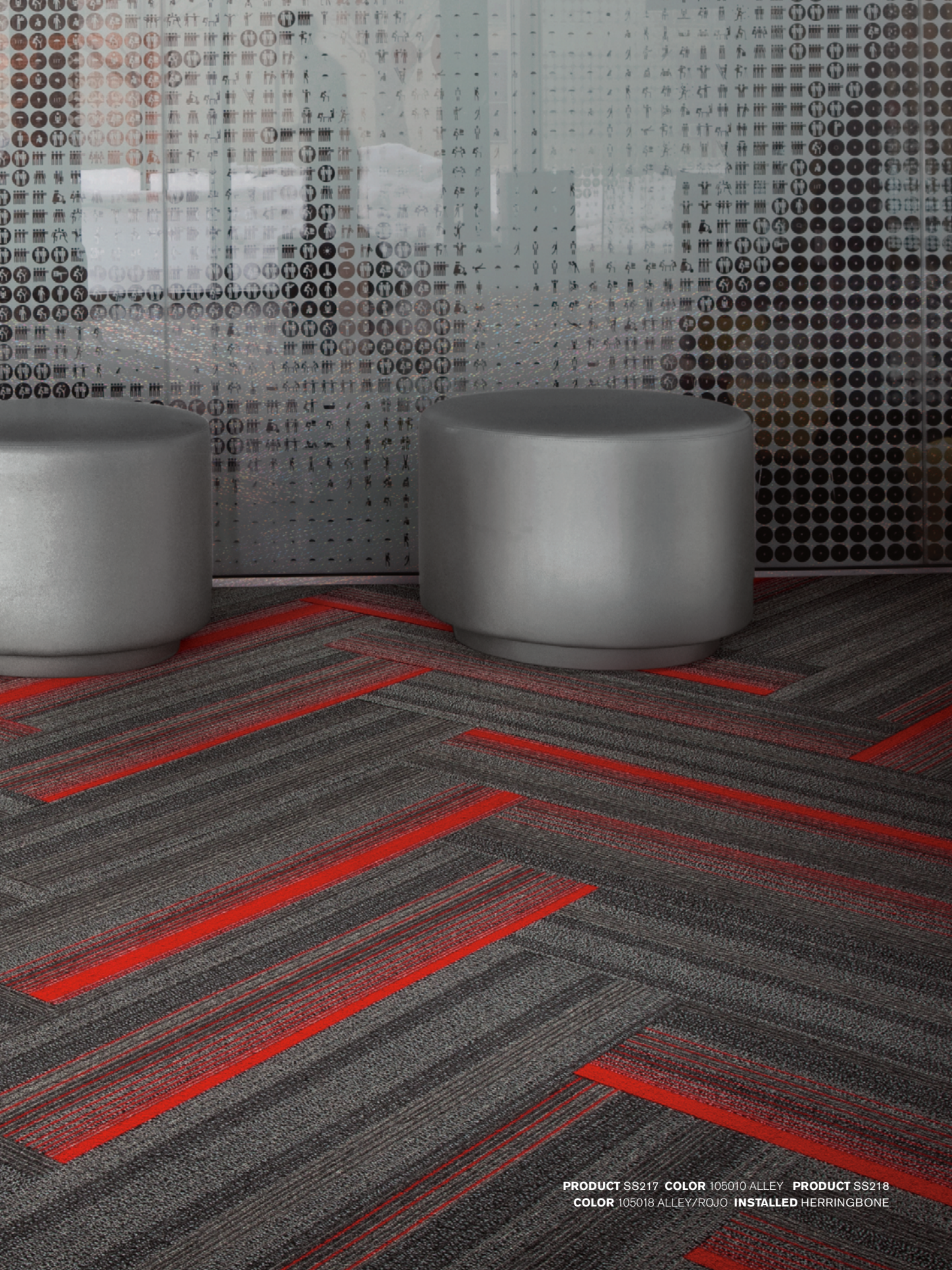
Street Smart™ Collection

It takes a certain savvy to really read the room, to know when to be bold or when to be reserved. We call it being street smart, which is also the name of our latest collection. The Street Smart Collection is a pairing of two styles that can easily handle the kinds of situations that urban life presents.

Street Smart's eight tonal neutrals lead the way with eight more colorful companions to brighten the possibilities. It's offered in our Skinny Planks™, which means it can move across the floor in really interesting ways. With up to 70% total recycled content when specifying the GlasBac®RE backing option, Street Smart might just be the smartest choice you make today.

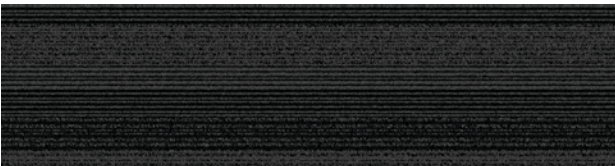


PRODUCT SS217 COLOR 105009 LANE
PRODUCT SS218 COLOR 105017 LANE/VERDE PRIMAVERA INSTALLED ASHLAR



PRODUCT SS217 COLOR 105010 ALLEY PRODUCT SS218
COLOR 105018 ALLEY/ROJO INSTALLED HERRINGBONE

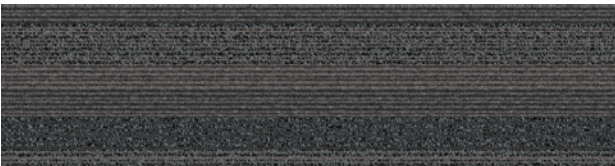
SS217 Colorline



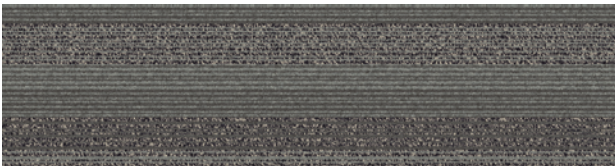
105008 PASSAGEWAY



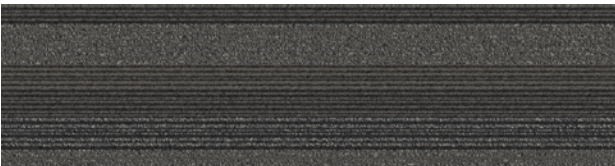
105009 LANE



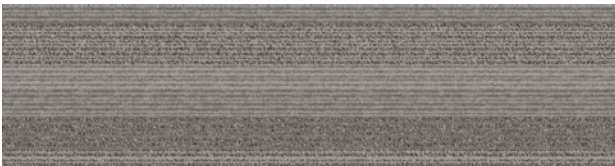
105010 ALLEY



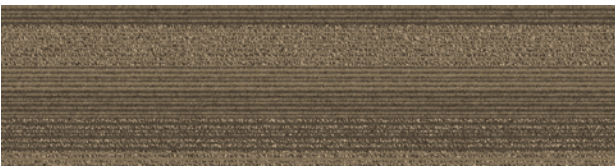
105011 CROSSROAD



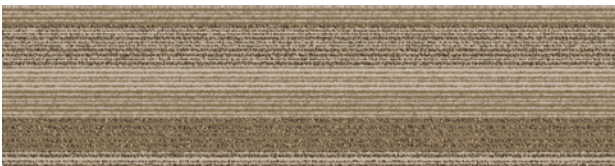
105012 SIDEWALK



105013 PATH



105014 WALKWAY



105015 BACK STREET

Specifications

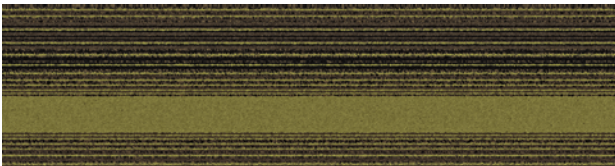
Modular, 25cm x 1m	142640AK00
Backing System	GlasBac® Tile
Yarn Manufacturer	Universal
Yarn System	Post-Consumer Content Type 6,6 Nylon
Color System	100% Solution Dyed
Construction	Tufted Pattern Loop
Lifetime Antimicrobial	Intersept®
Soil/Stain Protection	Protekt2®
Pile Thickness	0.062 in., 1.6 mm
Pile Density	9,290
Total Recycled Content	51%
Indoor Air Quality	CRI Green Label Plus #GLP0820



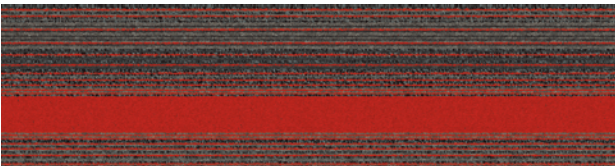
SS218 Colorline



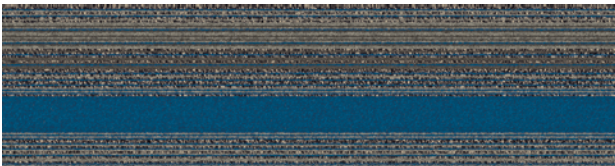
105016 PASSAGEWAY/LAGUNA



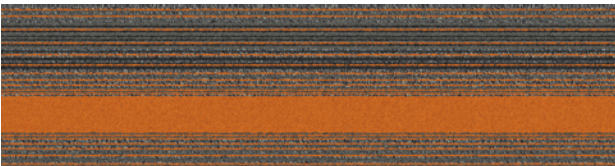
105017 LANE/VERDE PRIMAVERA



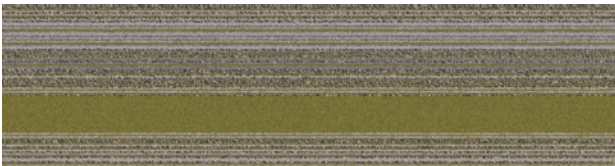
105018 ALLEY/ROJO



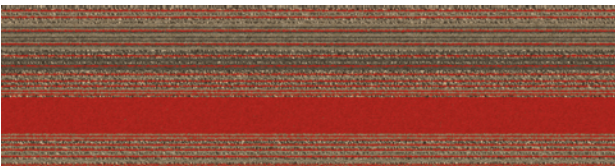
105019 CROSSROAD/LAGUNA



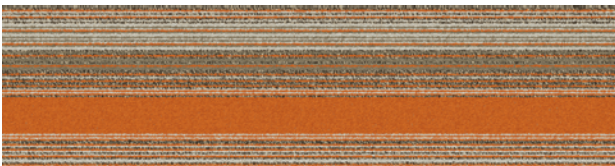
105020 SIDEWALK/NARANJA



105021 PATH/VERDE PRIMAVERA



105022 WALKWAY/ROJO



105023 BACK STREET/NARANJA

Specifications

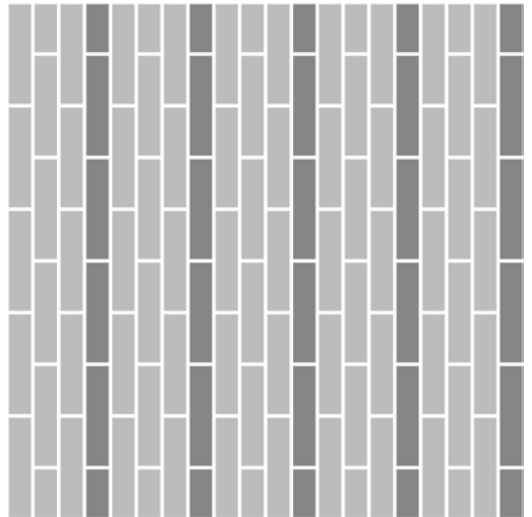
Modular, 25cm x 1m	142650AK00
Backing System	GlasBac® Tile
Yarn Manufacturer	Universal
Yarn System	Post-Consumer Content Type 6,6 Nylon
Color System	100% Solution Dyed
Construction	Tufted Pattern Loop
Lifetime Antimicrobial	Intersept®
Soil/Stain Protection	Protekt2®
Pile Thickness	0.062 in., 1.6 mm
Pile Density	9,290
Total Recycled Content	51%
Indoor Air Quality	CRI Green Label Plus #GLP0820



Design Ideas Below are floor layouts showing how to create the design ideas shared in several of the images featured in this brochure.

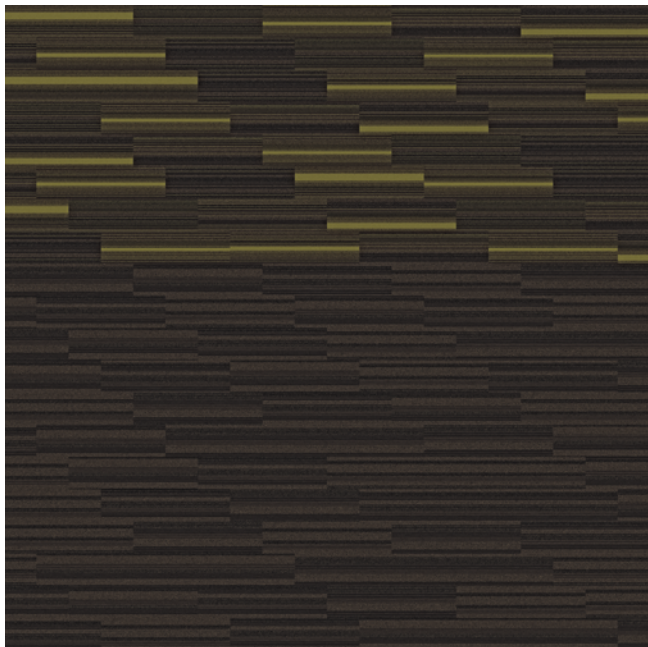


PRODUCT SS217 **COLOR** 105013 PATH
PRODUCT SS218 **COLOR** 105021 PATH/VERDE PRIMAVERA **INSTALLED** ASHLAR



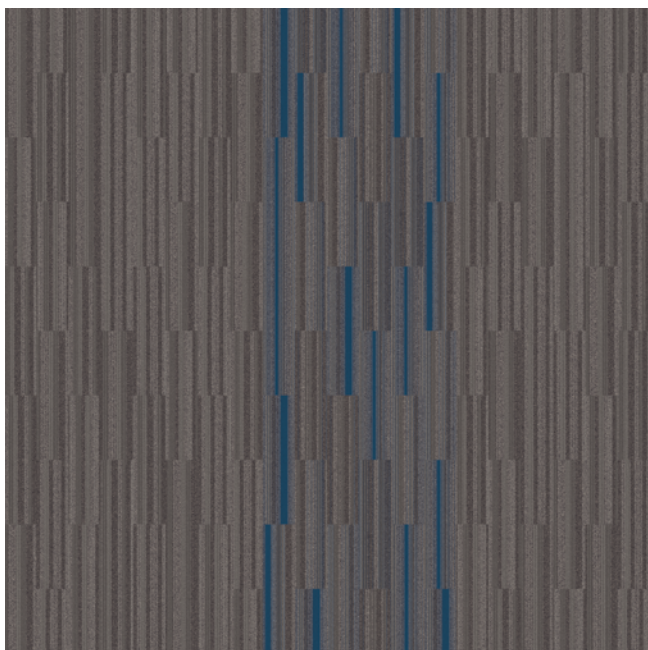
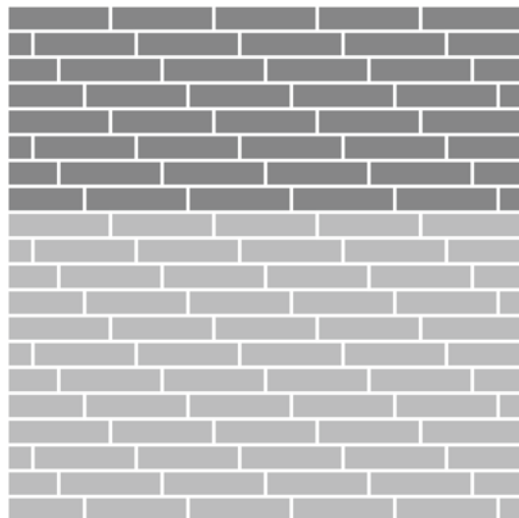
PRODUCT SS217 **COLOR** 105010 ALLEY **PRODUCT** SS218
COLOR 105018 ALLEY/ROJO **INSTALLED** HERRINGBONE





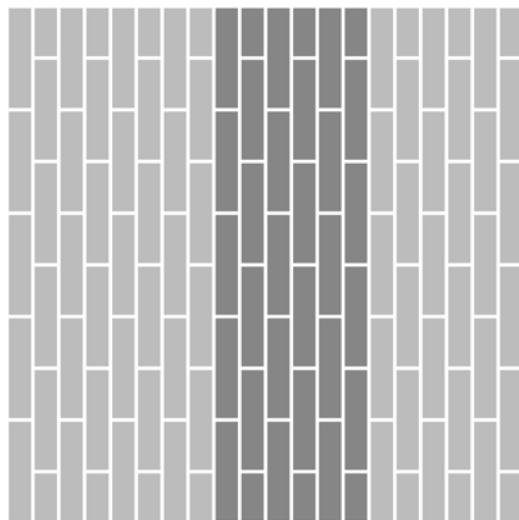
PRODUCT SS217 **COLOR** 105009 LANE

PRODUCT SS218 **COLOR** 105017 LANE/VERDE PRIMAVERA **INSTALLED** ASHLAR



PRODUCT SS217 **COLOR** 105011 CROSSROAD

PRODUCT SS218 **COLOR** 105019 CROSSROAD/LAGUNA **INSTALLED** ASHLAR



Why Our Modular Carpet?



Modular Carpet Tile

Performance and Flexibility. Interface's standard backing systems set the industry standard for modular performance. Tiles stay on the floor with no upcurl, no tapping and no rippling effect, yet are easy to selectively replace. Our modular carpet is also easier to handle, install and maintain than bulky roll carpet. And, it installs with less waste so you save time and money — 3-4% for typical modular carpet compared to an average waste factor of 14% for traditional roll carpet.



Cool Carpet™

The Low Carbon Option

Help stop climate change. ALL Interface modular carpet sold in North America is third party verified climate neutral Cool Carpet. We start by using low-carbon materials and manufacturing processes, then Cool Carpet zeros out all remaining greenhouse gas (GHG) emissions associated with the entire lifecycle of your carpet, from raw material extraction through use and recycling. And climate neutral Cool Carpet may be eligible for a USGBC or CaGBC LEED Innovation Credit.



TacTiles®

No Glue Installation. Our revolutionary TacTiles installation system eliminates the need for glue, adhering tiles securely together to form a floor that "floats" for greater flexibility, easier replacement and long-term performance. The result? Less mess, less waste and virtually no VOCs, not to mention an environmental footprint that is over 90% lower than that of traditional glue adhesives.

Samples

Order samples at www.interface.com. You'll receive email order confirmations, 24/7 access to order status and more. Not near a computer? You can also request samples by calling one of the numbers below.

United States 1.877.605.1500	Canada 1.866.398.3192
Brazil + 55 11 2196 0900	Latin America + 52 55 6395 5100

www.interface.com

Register at www.interface.com to:

- Browse products and order samples
- View carpet in a variety of room scenes
- Use the Floors design tool to create layouts you can save or share
- Use our LEED Calculator
- Check order status and inventory availability
- Sign up to get the latest information on Interface products and news

InterCircle™ Sample Return

Help us close the loop on the carpet sampling process. Through our InterCircle Sample Return program, sample materials stay out of the landfill and are re-used as samples until it is time to recycle them into new carpet. By reducing sample production material and diverting old materials from the landfill, we can reduce our overall environmental footprint.

Call 1.877.605.1500 (U.S.) or 1.866.398.3192 (Canada) to order a sample return bag with a prepaid return label.

Third Party Certification

cool carpet™

Cool Carpet – Our third party verified carbon offset program zeroes out all greenhouse gas (GHG) emissions associated with the entire lifecycle of your carpet.



Environmental Product Declaration (EPD) – A statement of product ingredients and environmental impacts over the entire life cycle of a product. A comprehensive life cycle assessment (LCA) is performed to ISO standards to develop an EPD, after which both the EPD and LCA must be third party verified.



Sustainable Assessment for Carpet – The only carpet sustainability standard in North America that evaluates the environmental impact of carpet for its entire lifecycle.



CRI Green Label Plus – An independent testing program that identifies carpet and adhesives with very low emissions of VOCs to help improve indoor air quality.



Intersept®

Mold Protection. Our proprietary preservative, Intersept, protects our modular carpet against mold growth and odor-causing bacteria — guaranteed. Intersept treated carpet, with proper maintenance, shows no mold or bacterial growth when tested per the ASTM E2471 Standard Test Method. Intersept is EPA approved for safe use in carpet, water insoluble and contains no halogens, heavy metals, phenols or formaldehyde.



ReEntry®

Recyclable is Now a Reality. Through our ReEntry program and partnerships with our fiber suppliers and recycling centers throughout North America, separated Type 6 and 6,6 nylon are recycled into new 6 and 6,6 nylon, while separated GlasBac® and similar competitor backings are recycled into GlasBac®RE non-virgin PVC backing using our Cool Blue™ technology. The result? Products with up to 81% total recycled content, including as much as 35% post-consumer content.



Sustainable Choice

Environmental Responsibility. Interface was the industry's first to publish an EPD (Environmental Product Declaration), which evaluates consistent factors based on full lifecycle assessment (LCA). We now have published EPDs for more than 99% of our products globally.

In addition, all Interface products with GlasBacRE backing meet the Platinum level of the NSF/ANSI 140 Sustainable Assessment for Carpet. GlasBac or NexStep® backed products meet the Gold level. All may contribute toward a USGBC or CaGBC LEED Innovation Credit.



RECYCLED
Paper made from
recycled material
FSC® C009723



PLEASE RECYCLE

All product specifications reflect averages derived from product sample testing, are subject to normal manufacturing and testing tolerances and inherent pattern variances, and may be changed without notice. For more information about these and other important attributes of the product(s) described herein, including recycled content and product warranty information, please see www.interface.com/disclaimer.

Printed on 50% post consumer waste (PCW) fiber manufactured using wind power.

We have tried our very best to accurately represent product colors. However, due to the nature of printed materials, color of actual products may vary slightly. Please request a sample to see actual product color.

www.interface.com

United States Headquarters

1503 Orchard Hill Road
LaGrange, GA 30240
1.800.336.0225 ext.6511

Canadian Headquarters

233 Lahr Drive
Belleville, ON K8N 5S2
1.800.267.2149 ext.2128

Brazilian Headquarters

Rua Surubim, 577 - Conjuntos
73/74 7º Andar
04571-050 - São Paulo - SP
+ 55 11 2196 0900

Latin American Headquarters

Montes Urales # 415 Piso 6
Col. Lomas de Chapultepec
México City, D.F. 11000
Mexico
+ 52 55 6395 5100

CIM # IFS00702 01/2016



Mission Zero®

our promise to eliminate any
negative impact our company
may have on the environment
by the year 2020.