



- base slitta in tondino ø 14 mm cromato (Mod. BS75) con piedini con gancio di allineamento
- base slitta in tondino ø 14 mm cromato con braccioli in PP (Mod. BS47) con piedini
- base slitta in tondino ø 14 mm cromato per sgabello con poggiatesta (mod. BS123)
- sedile e sottosedile in polipropilene PXW

versione plastica

- schienale in polipropilene PXW

versione rete

- schienale con cornice in polipropilene rivestito in rete RT

versione sign

- schienale in polipropilene forato PXW

versione imbottita

- sedile e schienale (Optional) imbottiti in resina poliuretana densità 25 kg/m³ spessore 10 mm

dettagli tecnici



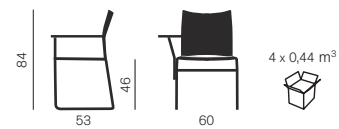
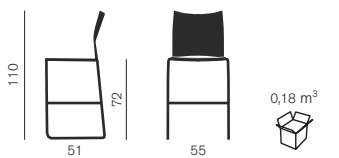
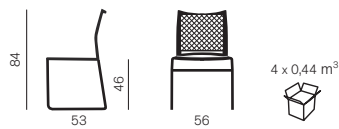
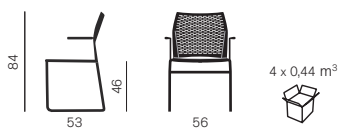
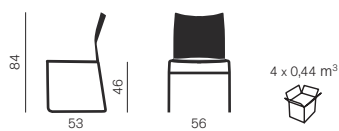
TAVOLETTA SCRITTOIO
APPLICABILE IN
MELAMINICO NERO
(MOD. BRA 29)



CARRELLO PORTA
SEDIE (MAX 40
SEDIE NELLA
VERSIONE SEDILE
IN PP, MOD. CRL1)

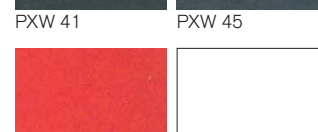
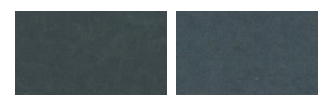


BARRA
SPAZIATRICE
(MOD. STA 23)



materiali

colori polipropilene disponibili



colori rete disponibili

