

Modular system of upholstered benches

Frame: solid and plywood with non deformable polyurethane foam with different densities, lining of polyester padding.

Fire retardant inner padding meets California Bulletin 117A, Italian Class 1IM Standards, "5852 British" Standards and "French M4" Standards and EN1021-1/2:2014 and Italian Class 1 IM Standards.

Covers: fabric, faux leather or C.O.M. (preferably in solid colours).

Base h.10 cm.: powder coated metal covered with stainless steel polished finish (65).

Bench is not freestanding: it must be wall mounted or floor anchored (hardware not included).

Accessories: back panel in lacquered MDF or upholstered, metal frame, kit for fixing the bench on the wall or floor anchored.

For Jo Tab table see "Tables" section.

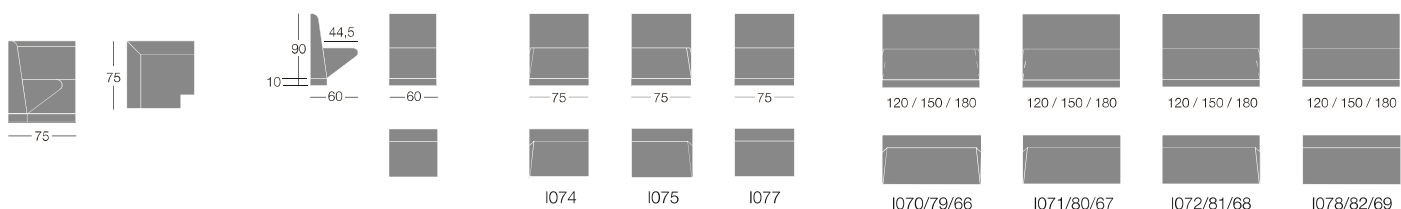


	Article	Upholstery	pcs/dimensions volume Gross weight Product Net weight
Module right end	I075	Gazebo	1 pc / 79x69x95 cm 0,51 m ³
Module left end	I074	Xtreme Plus / Magnum / Rivet / Spinning / Sprint	30 Kg
Central module	I077	Blazer / Bowen / Gingko / Maple / Step Melange	26 Kg
		Divina3 / Divina Melange2 / Steelcut 2 / Steelcut Trio3	
		C.O. faux leather / C.O.M. (solid colour)	
75 cm			
Module right + left end	I070	Gazebo	1 pc / 124x69x95 cm 0,81 m ³
Module right end	I071	Xtreme Plus / Magnum / Rivet / Spinning / Sprint	46 Kg
Module left end	I072	Blazer / Bowen / Gingko / Maple / Step Melange	38 Kg
Central module	I078	Divina3 / Divina Melange2 / Steelcut 2 / Steelcut Trio3	
		C.O. faux leather / C.O.M. (solid colour)	
120 cm			
Module right + left end	I079	Gazebo	1 pc / 154x69x95 cm 1,00 m ³
Module right end	I080	Xtreme Plus / Magnum / Rivet / Spinning / Sprint	60 Kg
Module left end	I081	Blazer / Bowen / Gingko / Maple / Step Melange	54 Kg
Central module	I082	Divina3 / Divina Melange2 / Steelcut 2 / Steelcut Trio3	
		C.O. faux leather / C.O.M. (solid colour)	
150 cm			
Module right + left end	I066	Gazebo	1 pc / 184x69x95 cm 1,20 m ³
Module right end	I067	Xtreme Plus / Magnum / Rivet / Spinning / Sprint	74 Kg
Module left end	I068	Blazer / Bowen / Gingko / Maple / Step Melange	66 Kg
Central module	I069	Divina3 / Divina Melange2 / Steelcut 2 / Steelcut Trio3	
		C.O. faux leather / C.O.M. (solid colour)	
180 cm			
Central module	I076	Gazebo	1 pc / 69x69x95 cm 0,45 m ³
60 cm		Xtreme Plus / Magnum / Rivet / Spinning / Sprint	28 Kg
		Blazer / Bowen / Gingko / Maple / Step Melange	22 Kg
		Divina3 / Divina Melange2 / Steelcut 2 / Steelcut Trio3	
		C.O. faux leather / C.O.M. (solid colour)	
Angle module	I073	Gazebo	1 pc / 69x69x95 cm 0,45 m ³
75x75 cm		Xtreme Plus / Magnum / Rivet / Spinning / Sprint	28 Kg
		Blazer / Bowen / Gingko / Maple / Step Melange	22 Kg
		Divina3 / Divina Melange2 / Steelcut 2 / Steelcut Trio3	
		C.O. faux leather / C.O.M. (solid colour)	

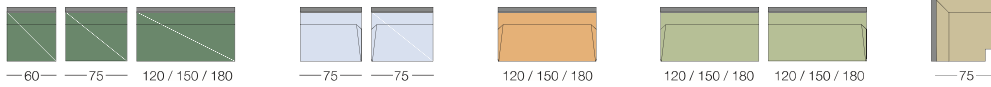
Notice

Right (DX) or left (SX) end refers to position when seated

Dimensions

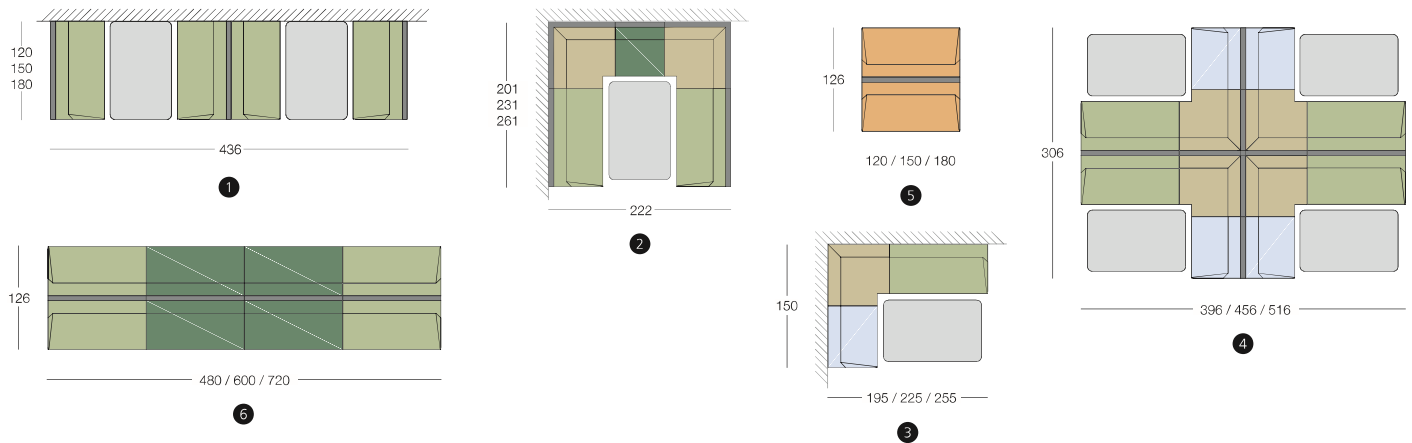


Modules



Compositions

A drawing of the required configuration must accompany your order



Accessories

*Upholstery in two different materials
or two colours of the same material*

Customer's own material

For customer's own material, the form at the end of the price list shall apply, to be sent to Segis Spa with the Client's signature.

Art. 1075/74/77

Solid fabric for 1 pc 221 cm (H.140 cm)

*Upholstery in two colours: or 1 pc seat/back 221 cm (H.140 cm),
1 pc Sides 95 cm (H.140 cm).*

Art. 1070/71/72/78

Solid fabric for 1 pc 315 cm (H.140 cm)

*Upholstery in two colours: or 1 pc seat/back 221 cm (H.140 cm),
1 pc Sides 95 cm (H.140 cm).*

Art. 1079/80/81/82

Solid fabric for 1 pc 441 cm (H.140 cm)

*Upholstery in two colours: or 1 pc seat/back 347 cm (H.140 cm),
1 pc Sides 95 cm (H.140 cm)*

Art. 1066/67/68/69

Solid fabric for 1 pc 504 cm (H.140 cm)

*Upholstery in two colours: or 1 pc seat/back 400 cm (H.140 cm),
1 pc Sides 95 cm (H.140 cm).*

Art. 1076 *Solid fabric for 1 pc 210 cm (H.140 cm)*

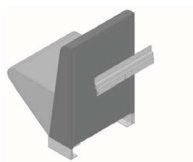
Art. 1073 *Solid fabric for 1 pc 368 cm (H.140 cm)*

Resistance tests

EN12727:2000 – seat and back static load test
EN12727:2000 – back horizontal static load test test
EN12727:2000 – back vertical static load test
EN12727:2000 – seat impact test
EN12727:2000 – back impact test
EN 12727:2000 – seat / back impact test
EN 12727:2000 – seat front edge fatigue test
EN 12727:2000 – back horizontal fatigue test

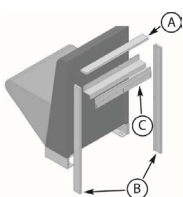
Accessories

Art. C060FISSA - kit to fix the bench on the wall without frame



Module 60 cm
 Module 75 cm
 Module 120 cm
 Module 150 cm
 Module 180 cm
 Angle module 75x75 cm

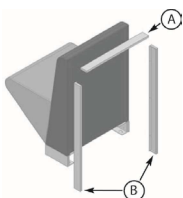
Art. C060FISCOR - kit to fix the bench on the wall with frame element



Module 60 cm
 Module 75 cm
 Module 120 cm
 Module 150 cm
 Module 180 cm
 Angle module 75x75 cm

Kit for seating module in central position consisting of elements A + C
 Kit for seating module in lateral position consisting of elements A + B + C
 Kit for single seating module consisting of elements A + B + B + C

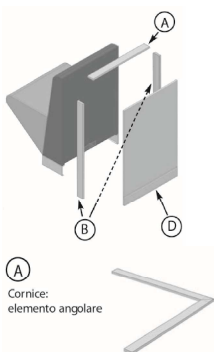
Art. C060FISTECO - kit with frame element for floor fixed version



Module 60 cm
 Module 75 cm
 Module 120 cm
 Module 150 cm
 Module 180 cm
 Angle module 75x75 cm

Kit for seating module in central position consisting of elements A
 Kit for seating module in lateral position consisting of elements A + B
 Kit for single seating module consisting of elements A + B + B

Art. C060FISPAN - it with back panel and frame element for floor fixed version



MDF panel, upholstered in faux-leather Gazebo

Module 60 cm
 Module 75 cm
 Module 120 cm
 Module 150 cm
 Module 180 cm
 Angle module 75x75 cm 1 lato a vista
 Angle module 75x75 cm 2 lati a vista

MDF panel, lacquered in white C or grey P

Module 60 cm
 Module 75 cm
 Module 120 cm
 Module 150 cm
 Module 180 cm
 Angle module 75x75 cm 1 lato a vista
 Angle module 75x75 cm 2 lati a vista

Kit for seating module in central position consisting of elements A + D
 Kit for seating module in lateral position consisting of elements A + B + D
 Kit for single seating module consisting of elements A + B + B + D