

Armchair / Sofa

Internal metal frame and cold-injection polyurethane foam. **Fire retardant foam meets California Bulletin 117A, EN1021-1/2:2014 and Italian Class 1 IM Standards.**

Special foam meeting the 5852 British Standards is available on request.

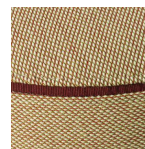
Legs in steel with powder coated or chromed finish.

Covers: fabric, faux-leather, leather or C.O. M.

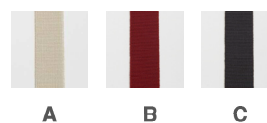
(preferably in solid colours) with heavy duty Gros Grain welting.



	Article	Upholstery	pcs/dimensions volume Gross Weight Product Net Weight
Armchair Metal legs	I200	Gazebo Xtreme Plus / Magnum / Rivet / Spinning / Sprint Blazer / Bowen / Gingko / Maple / Step Melange Divina3 / Divina Melange2 / Steelcut2 / Steelcut Trio3 Leather C.O.L. C.O. faux leather / C.O.M. (solid colour)	1 pc / 74x74x57 cm 0,31 m ³ 21 Kg 18,6 Kg
Sofa Metal legs	I201	Gazebo Xtreme Plus / Magnum / Rivet / Spinning / Sprint Blazer / Bowen / Gingko / Maple / Step Melange Divina3 / Divina Melange2 / Steelcut2 / Steelcut Trio3 Leather C.O.L. C.O. faux leather / C.O.M. (solid colour)	1 pc / 139x74x57 cm 0,59 m ³ 39 Kg 32,3 Kg

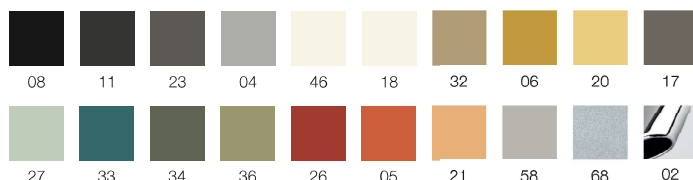


Gros Grain colours

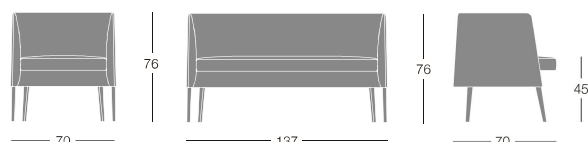


Finishes

Metal legs



Dimensions



Additional costs

*Upholstery in two different materials
or two colours of the same material*

Customer's own material

For customer's own material/leather, the form at the end of the price list shall apply, to be sent to Segis Spa with the Client's signature.

Art. I200 Solid fabric: for 1 pc 290 cm (H.140 cm)

C.O.L. qty: for 1 pc 4,20m²

Upholstery in two colours for 1 pc (H.140 cm): seat 80 cm / shell 210 cm

Art. I201 Solid fabric: for 1 pc 410 cm (H.140 cm)

C.O.L. qty: for 1 pc 6,20 m²

Upholstery in two colours for 1 pc (H.140 cm): seat 130 cm / shell 280 cm

Resistance tests

Armchair Agorà (art. I200)

Test ANSI-BIFMA X5.11 -2015/7 – backrest strenght test

Test ANSI-BIFMA X5.11 -2015/11 - seating durability test

Test ANSI-BIFMA X5.11 -2015/12 - stability test

Test ANSI-BIFMA X5.11 -2015/16 - back durability test

Armchair / Sofa

Internal metal frame and cold-injection polyurethane foam.
Fire retardant foam meets California Bulletin 117A, EN1021-1/2:2014 and Italian Class 1 IM Standards.

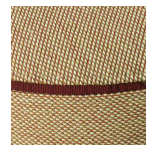
Special foam meeting the 5852 British Standards is available on request.

Legs in oak.

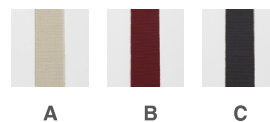
Covers: fabric, faux-leather, leather or C.O. M. (preferably in solid colours) with heavy duty Gros Grain welting



	Article	Upholstery	pcs/dimensions volume Gross Weight Product Net Weight
Armchair Wood legs	I210	Gazebo Xtreme Plus / Magnum / Rivet / Spinning / Sprint Blazer / Bowen / Gingko / Maple / Step Melange Divina3 / Divina Melange2 / Steelcut2 / Steelcut Trio3 Leather C.O.L. C.O. faux leather / C.O.M. (solid colour)	1 pc / 74x74x56 cm 0,31 m ³ 21 Kg 18,6 Kg
Sofa Wood legs	I211	Gazebo Xtreme Plus / Magnum / Rivet / Spinning / Sprint Blazer / Bowen / Gingko / Maple / Step Melange Divina3 / Divina Melange2 / Steelcut2 / Steelcut Trio3 Leather C.O.L. C.O. faux leather / C.O.M. (solid colour)	1 pc / 139x74x57 cm 0,59 m ³ 39 Kg 32,3 Kg



Gros Grain colours



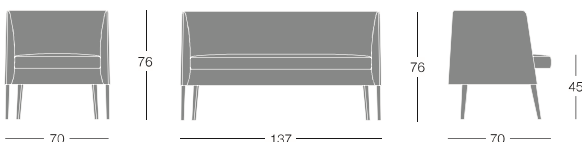
Finishes

Wood legs



RO 02 RO 03

Dimensions



Additional costs

*Upholstery in two different materials
 or two colours of the same material*

Customer's own material

For customer's own material/leather, the form at the end of the price list shall apply, to be sent to Segis Spa with the Client's signature.

Art. I210 Solid fabric: for 1 pc 290 cm (H.140 cm)

C.O.L. qty: for 1 pc 4,20m²

Upholstery in two colours for 1 pc (H.140 cm): seat 80 cm / shell 210 cm

Art. I211 Solid fabric: for 1 pc 410 cm (H.140 cm)

C.O.L. qty: for 1 pc 6,20 m²

Upholstery in two colours for 1 pc (H.140 cm): seat 130 cm / shell 280 cm

Bench

Plywood frame and polyurethane foam with lining of polyester padding.

Fire retardant foam meets California Bulletin 117A, EN1021-1/2:2014 and Italian Class 1 IM Standards.

Legs in steel with powder coated or chromed finish or oak.

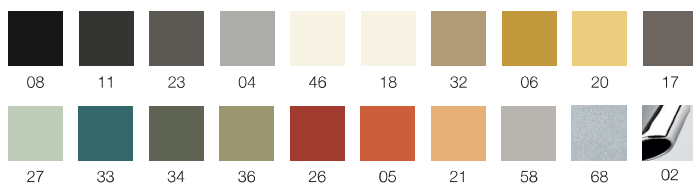
Covers: fabric, faux-leather, leather or C.O. M. (preferably in solid colours) with heavy duty Gros Grain welting.



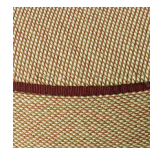
	Article	Upholstery	pcs/dimensions volume Gross Weight Product Net Weight
Bench Metal legs	I202	Gazebo Xtreme Plus / Magnum / Rivet / Spinning / Sprint Blazer / Bowen / Gingko / Maple / Step Melange Divina3 / Divina Melange2 / Steelcut2 / Steelcut Trio3 Leather C.O.L. C.O. faux leather / C.O.M. (solid colour)	1 pc / 19x168x89 cm 0,28 m ³ 28,5 Kg 24,5 Kg
Bench Wood legs	I212	Gazebo Xtreme Plus / Magnum / Rivet / Spinning / Sprint Blazer / Bowen / Gingko / Maple / Step Melange Divina3 / Divina Melange2 / Steelcut2 / Steelcut Trio3 Leather C.O.L. C.O. faux leather / C.O.M. (solid colour)	1 pc / 19x168x89 cm 0,28 m ³ 28,5 Kg 24,5 Kg

Finishes

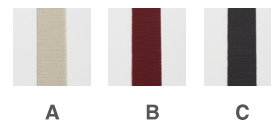
Metal legs



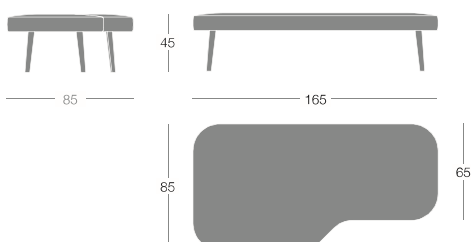
Wood legs



Gros Grain colours



Dimensions



Additional costs

Upholstery in two different materials
or two colours of the same material

Customer's own material

For customer's own material/leather, the form at the end of the price list shall apply, to be sent to Segis Spa with the Client's signature.

Art. I202
Solid fabric: for 1 pc 190 cm (H.140 cm)
C.O.L. qty: for 1 pc 2,86 m²

Round ottomans in two dimensions

Ø 73 or Ø 123 cm, available with six castors or with 6 thermoplastic glides.

Base in black thermoformed plastic material.

Frame in plywood and polyurethane foam with lining of polyester padding.

Fire retardant foam meets California Bulletin 117A, EN1021-1/2:2014 and Italian Class 1 IM Standards.

Special foam meeting the 5852 British Standards is available on request.

Covers: fabric, faux-leather, leather or C.O. M. (preferably in solid colours) with heavy duty Gros Grain welting.



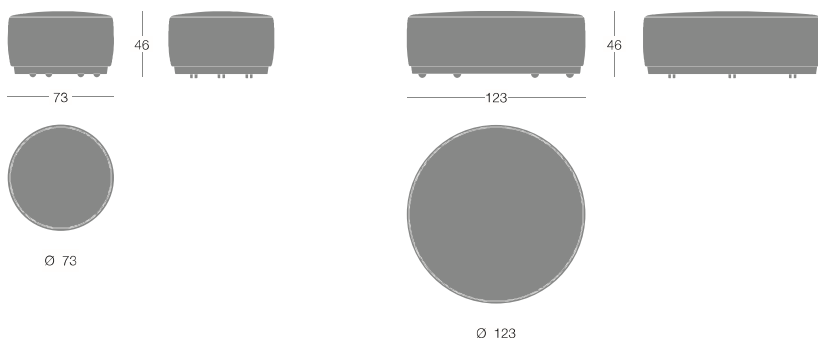
	Article	Upholstery	pcs/dimensions volume Gross Weight Product Net Weight
Ottoman Ø 73 cm	I204	Gazebo Xtreme Plus / Magnum / Rivet / Spinning / Sprint Blazer / Bowen / Gingko / Maple / Step Melange Divina3 / Divina Melange2 / Steelcut2 / Steelcut Trio3 Leather C.O.L. C.O. faux leather / C.O.M. (solid colour)	1 pc / 74x74x48 cm 0,26 m ³ 13,5 Kg 10,5 Kg
Ottoman Ø 123 cm	I205	Gazebo Xtreme Plus / Magnum / Rivet / Spinning / Sprint Blazer / Bowen / Gingko / Maple / Step Melange Divina3 / Divina Melange2 / Steelcut2 / Steelcut Trio3 Leather C.O.L. C.O. faux leather / C.O.M. (solid colour)	1 pc / 124x126x48 cm 0,75 m ³ 30 Kg 24 Kg



Gros Grain colours



Dimensions



Customer's own material

For customer's own material/leather, the form at the end of the price list shall apply, to be sent to Segis Spa with the Client's signature.

Art. I204

Solid fabric: for 1 pc 180 cm (H.140 cm)

C.O.L. qty: for 1 pc 2,7 m²

Art. I205

Solid fabric: for 1 pc 320 cm (H.140 cm)

C.O.L. qty: for 1 pc 4,9 m²

Ottoman-stool

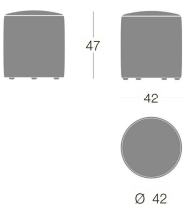
Covers: fabric, faux-leather, leather or C.O.M (preferably in solid colours) with heavy duty Gros Grain welting.



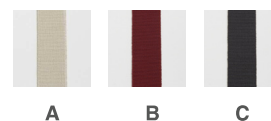
	Article	Upholstery	pcs/dimensions volume Gross Weight Product Net Weight
Ottoman Ø 42 cm - H. 47 cm	I203	Ottoman-stool, colours available in 10 working days delivery Gazebo: Black ref. 991 Gros Grain Beige A Grey ref. 1955 Gros Grain Bordeaux B Beige ref. 151 Gros Grain Anthracite C	1 pc 43,5x43,5x50 cm 0,09 m ³ 6,5 kg 5,6 kg
Ottoman Ø 42 cm - H. 47 cm	I213	Ottoman-stool in other finishes Gazebo Xtreme Plus / Magnum / Rivet / Spinning / Sprint Blazer / Bowen / Gingko / Maple / Step Melange Divina3 / Divina Melange2 / Steelcut2 / Steelcut Trio3 Leather C.O.L. C.O. faux leather / C.O.M. (solid colour)	1 pc 43,5x43,5x50 cm 0,09 m ³ 6,5 kg 5,6 kg



Dimensions



Gros Grain colours



Customer's own material

For customer's own material/leather, the form at the end of the price list shall apply, to be sent to Segis Spa with the Client's signature.

Art. I203 / I213

Solid fabric: for 1 pc 110cm (H.140 cm)

C.O.L. qty: for 1 pc 1,6 m²