

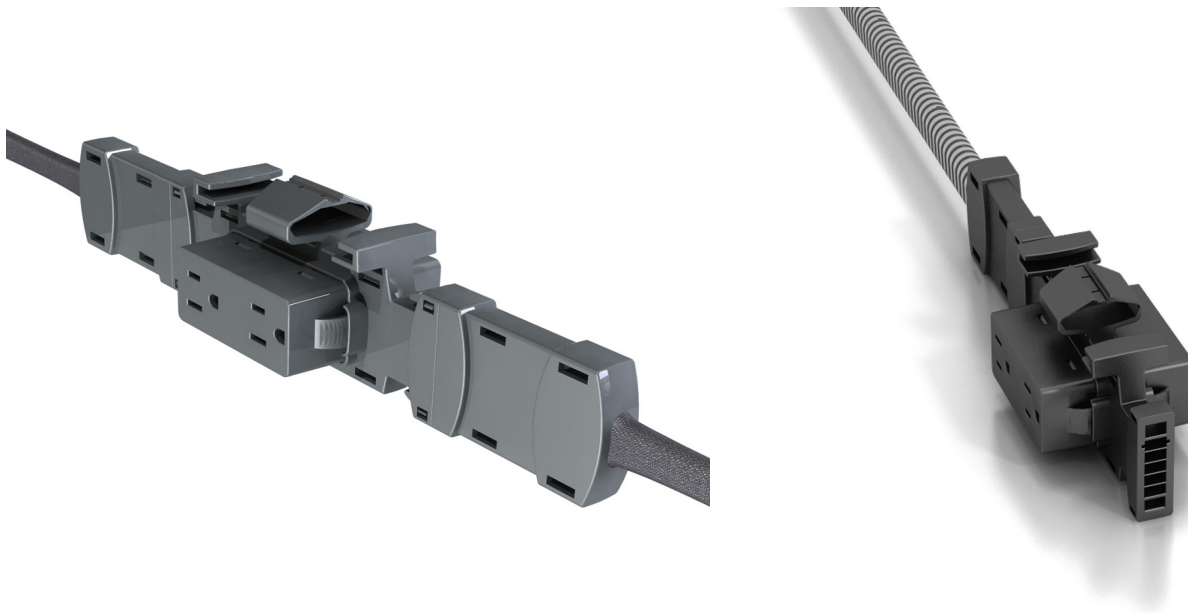


# Phase 3

BYRNE

# Phase 3<sup>®</sup>

---



Now, getting your customers the power they need is as easy as 1, 2, Phase 3. This new phase in powered panels offers the confidence and reliability of a Byrne product, as well as features like: UL1286 Recognized, Compatible with 2" to 3.5" panels, 3-phase system, Modular receptacles, Flexible mesh conduit jumpers, Multiple circuit configurations selected by receptacles, Double-sided system, Works with standard panel sizes, and 3-circuit/5-wire system

**BYRNE**

byrne.com | 1.800.999.3567

2019  
Confidential Byrne Electrical Specialists